



Benham & Reeves

Earls Court Road, Kensington, SW5

£531 per week, £2,300 per month + fees

🛏 1 Bedroom 🚿 1 Bathroom 🛋 Furnished

A bright and modern 4th floor apartment of a residential building in the heart of Earls Court, SW5, a short walk from Earls Court Underground Station.

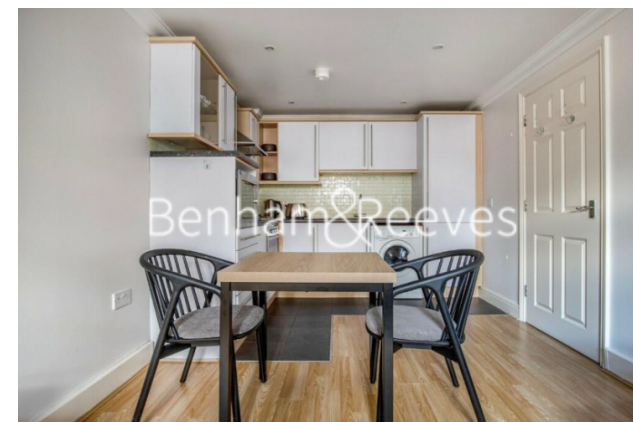
Please [click here](#) for full detail

Property features

One Bedroom | One Bathroom | Reception | Fourth Floor /Wooden Floors | Fully Fitted Open Planned Kitchen | EPC-E | Modern Appliances | 426 square feet | Close to Local Amenities | Nearby Earls Court underground Station

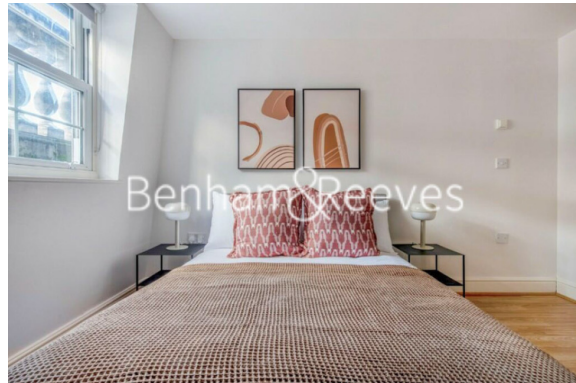
For more information about this property,
please call our Kensington branch on

020 7938 3522



Redress & Client Money Protection :
Benham and Reeves are members of The Property Ombudsman redress scheme and have Client Money protection with ARLA Propertymark.
You can find more information on our website at <https://www.benhams.com/membership/>

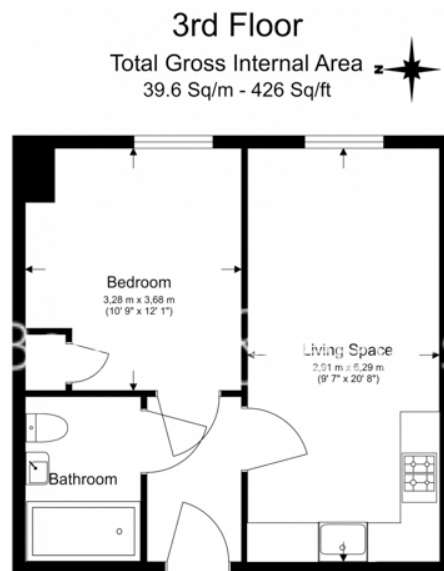
Benham & Reeves



Earls Court Road, Kensington, SW5

£531 per week, £2,300 per month + fees

www.benhams.com



Floor Plan measurements are approximate and are for illustrative purposes only. While we do not doubt the floor plans accuracy, we make no guarantee, warranty or representation as to the accuracy and completeness of the floor plan.

Score	Energy rating	Current	Potential
92+	A		
81-91	B		81 B
69-80	C		
55-68	D		
39-54	E	51 E	
21-38	F		
1-20	G		

London branches open six days a week Mon - Sat

Canary Wharf | City | Colindale | Dartmouth Park | Ealing | Fulham
Hammersmith | Hampstead | Highgate | Hyde Park | Kensington | Kew
Knightsbridge | Nine Elms | Shoreditch | Southall | Surrey Quays
Wapping | Wembley | White City | Woolwich

International offices

China | Hong Kong SAR | India | Indonesia | Qatar | Malaysia | Middle East |
Singapore | South Africa | Thailand | Turkey



Benham & Reeves