



Benham & Reeves

Courtfield Gardens, Kensington, SW5

£1,211 per week, £5,248 per month + fees

 3 Bedrooms  3 Bathrooms  Furnished

A spacious split-level apartment arranged over the ground and lower ground floors, situated in a beautiful period building close to Gloucester Road. Within walking distance of Gloucester Road Underground station, Hyde Park, the Natural History Museum, V&A, and the Royal Albert Hall.

Please [click here](#) for full detail

Property features

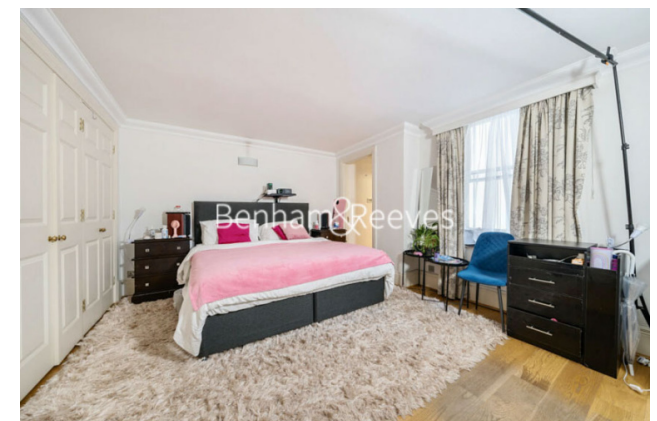
Three Double Bedrooms | Three Bathrooms and Guest WC | Split Level Apartment | High Ceilings | Wood Flooring | EPC-E | 1580 Sq Ft / 146.8 Sq Mt | Separate Eat In Kitchen | Close to Amenities | Nearby Gloucester Road Underground station

For more information about this property,
please call our Kensington branch on

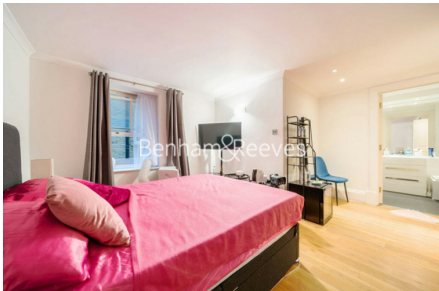
020 7938 3522

Redress & Client Money Protection :

Benham and Reeves are members of The Property Ombudsman redress scheme and have Client Money protection with ARLA Propertymark. You can find more information on our website at <https://www.benhams.com/membership/>



Benham & Reeves



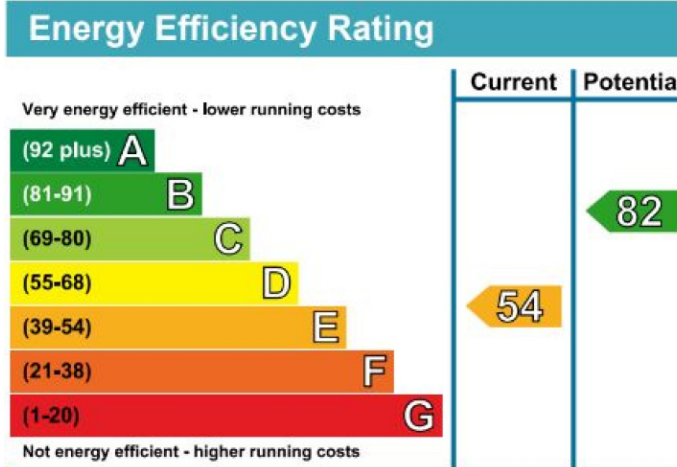
Courtfield Gardens, Kensington, SW5

£1,211 per week, £5,248 per month + fees

www.benhams.com



Floor Plan measurements are approximate and are for illustrative purposes only. While we do not doubt the floor plans accuracy, we make no guarantee, warranty or representation as to the accuracy and completeness of the floor plan.



London branches open six days a week Mon - Sat

Canary Wharf | City | Colindale | Dartmouth Park | Ealing | Fulham
Hammersmith | Hampstead | Highgate | Hyde Park | Kensington | Kew
Knightsbridge | Nine Elms | Shoreditch | Southall | Surrey Quays
Wapping | Wembley | White City | Woolwich

International offices

China | Hong Kong SAR | India | Indonesia | Qatar | Malaysia | Middle East | Pakistan
Singapore | South Africa | Thailand | Turkey



Benham & Reeves