



Benham & Reeves

Ashburn Gardens, Kensington, SW7

£589 per week, £2,552 per month + fees

 1 Bedroom  1 Bathroom  Furnished

A spacious apartment situated on the raised ground floor of a well-maintained period conversion in the heart of Kensington. Good transport links from Gloucester Road and South Kensington (Circle, District and Piccadilly lines) Tube station.

Please [click here](#) for full detail

Property features

1 Bedroom | 1 Bathroom | Reception | Furnished | Fitted Kitchen | EPC-C | 484 Sq Ft | High Ceiling | Central Location | Nearby Gloucester Road Tube Station

For more information about this property,
please call our Kensington branch on

020 7938 3522

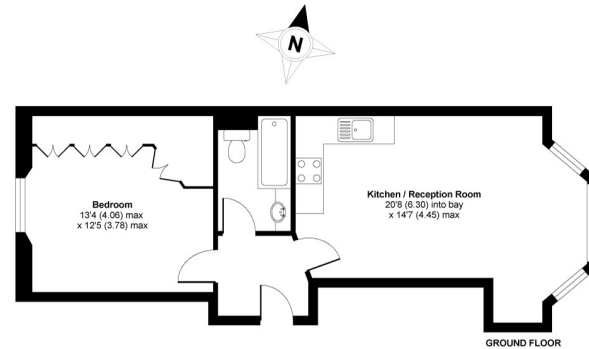




Ashburn Gardens, Kensington, SW7

£589 per week, £2,552 per month + fees

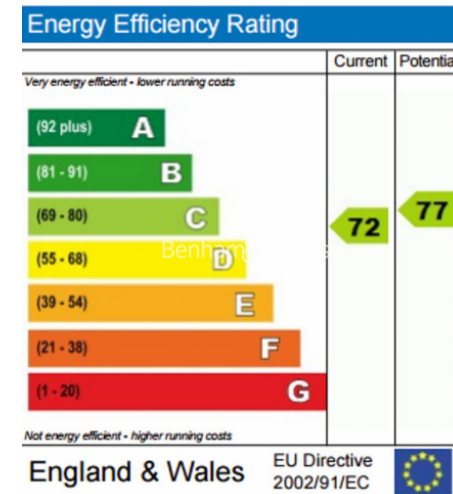
www.benhams.com



GROSS INTERNAL AREA 484 SQFT 44.9 SQM

Ashburn Gardens

Whilst every attempt has been made to ensure accuracy these plans are for representation purposes only as defined by RICS Code of Measuring Practice and should be used as such by any prospective purchaser or tenant.
Copyright nichecom.co.uk 2009 Produced for John D Wood & Co REF : 09-22131



London branches open six days a week Mon - Sat

Canary Wharf | City | Colindale | Dartmouth Park | Ealing | Fulham
Hammersmith | Hampstead | Highgate | Hyde Park | Kensington | Kew
Knightsbridge | Nine Elms | Shoreditch | Southall | Surrey Quays
Wapping | Wembley | White City | Woolwich

International offices

China | Hong Kong SAR | India | Indonesia | Qatar | Malaysia | Middle East |
Singapore | South Africa | Thailand | Turkey



Benham & Reeves