



Benham & Reeves

## **Kingston House North SW7**

£825 per week, £3,575 per month + fees

 2 Bedrooms    2 Bathrooms    Furnished

A well-appointed 978 sq ft TWO-BEDROOM apartment situated on the Lower ground floor of the prestigious KINGSTON HOUSE NORTH, opposite Hyde Park & within minutes of South Kensington & Knightsbridge. Residents of this luxury building enjoy Porter services and magnificent communal gardens.

Please [click here](#) for full detail

## Property features

**2 Bedrooms | 2 Bathrooms | Porter | 978 sq ft | Furnished | EPC-D | Reception/Dining Room | Gorgeous Communal Gardens | Low Council Tax Rating | South Kensington & Knightsbridge Stations**

For more information about this property,  
please call our Knightsbridge branch on

**020 7581 2112**



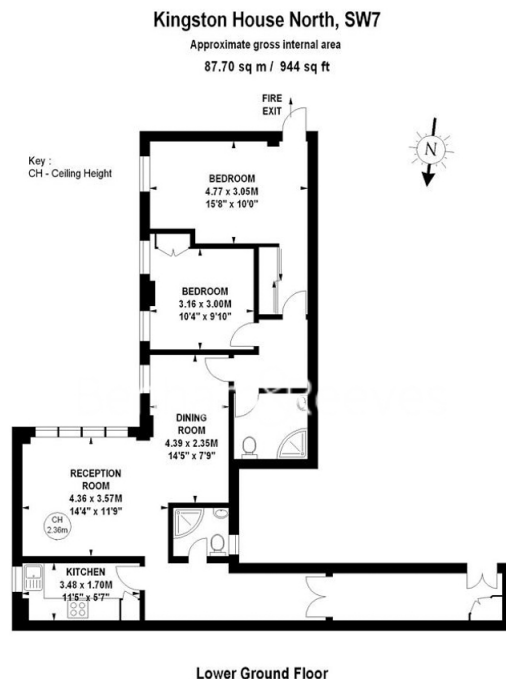




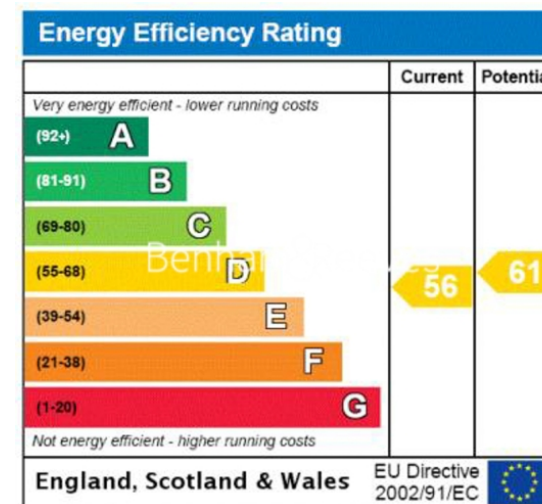
# Kingston House North SW7

£825 per week, £3,575 per month + fees

www.benhams.com



The floor plan is not to scale and measurements and areas shown are approximate and therefore should be used for illustrative purposes only. The plan has been prepared in accordance with the RICS code of Measuring Practice and whilst we have confidence in the information produced, it must not be relied on. If there is any aspect of particular importance, you should carry out or commission your own inspection of the property. Copyright of FeaturePRO.



## London branches open six days a week Mon - Sat

Canary Wharf | City | Colindale | Dartmouth Park | Ealing | Fulham  
Hammersmith | Hampstead | Highgate | Hyde Park | Kensington | Kew  
Knightsbridge | Nine Elms | Shoreditch | Southall | Surrey Quays  
Wapping | Wembley | White City | Woolwich

## International offices

China | Hong Kong SAR | India | Israel | Malaysia | Middle East | Pakistan  
Qatar | Singapore | South Africa | Thailand | Turkey



Benham & Reeves