



Benham & Reeves

Cornwall Gardens, Kensington, SW7

£1,038 per week, £4,500 per month + fees

 1 Bedroom  1 Bathroom  Unfurnished

An exceptionally large first floor apartment set in a beautifully refurbished period building, positioned nearby Gloucester Road (Circle, District and Piccadilly line) Underground Station.

Please [click here](#) for full detail

Property features

1 Bedroom | 1 Bathroom | Reception | Unfurnished | Fitted Kitchen | EPC-D | Close to Amenities | Separate Cloakroom | Nearby Kensington Tube Station

For more information about this property,
please call our Kensington branch on

020 7938 3522



Redress & Client Money Protection :
Benham and Reeves are members of The Property Ombudsman redress scheme and have Client Money protection with ARLA Propertymark.
You can find more information on our website at <https://www.benhams.com/membership/>

Benham & Reeves



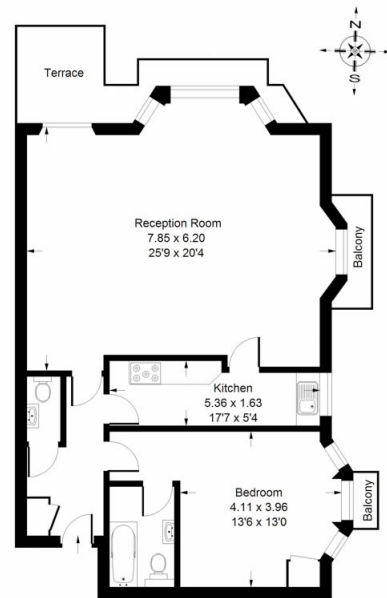
Cornwall Gardens, Kensington, SW7

£1,038 per week, £4,500 per month + fees

www.benhams.com

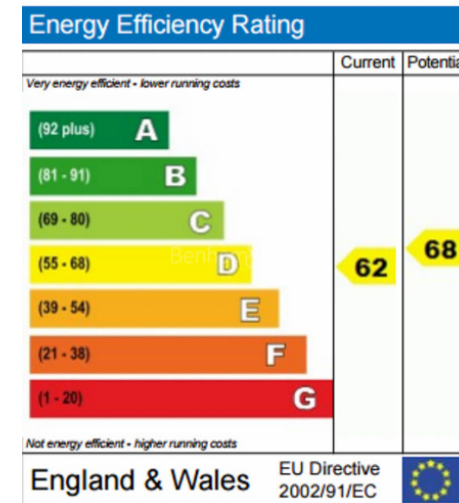
Cornwall Gardens, SW7

Approx. Gross Internal Area
87.9 sq m / 946 sq ft



First Floor

Whilst every attempt has been made to ensure the accuracy of the floor plan, measurements are approximate and not to scale.
No guarantee is given on the total square footage of the property quoted on the plan. Figures given are for guidance.
Plan is for illustration purposes only.



London branches open six days a week Mon - Sat

Canary Wharf | City | Colindale | Dartmouth Park | Ealing | Fulham
Hammersmith | Hampstead | Highgate | Hyde Park | Kensington | Kew
Knightsbridge | Nine Elms | Shoreditch | Southall | Surrey Quays
Wapping | Wembley | White City | Woolwich

International offices

China | Hong Kong SAR | India | Indonesia | Qatar | Malaysia | Middle East | Pakistan
Singapore | South Africa | Thailand | Turkey



Benham & Reeves