



Benham & Reeves

Vaughan Way, Wapping, E1W

£785 per week, £3,402 per month + fees

 2 Bedrooms  2 Bathrooms  Unfurnished

Luxury two-bedroom apartment in a newly built development in Wapping within walking distance of The City and close to the Underground, DLR & London Overground.

Please [click here](#) for full detail

Property features

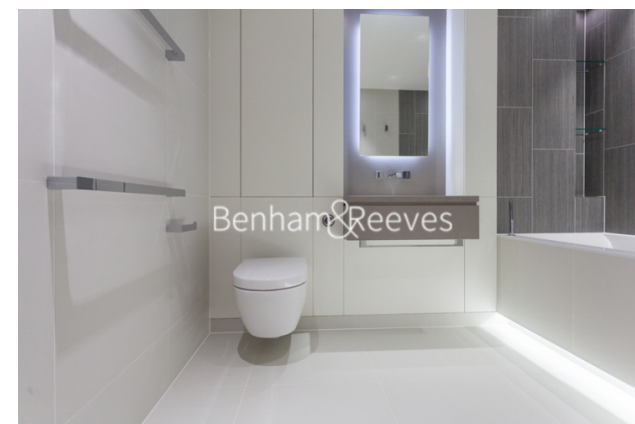
1 Luxury 2 Bedroom, 2 Bathroom Apartment | Open Plan Reception With Balcony | Fitted Kitchen With Integrated Siemens Appliances | 2 Well Equipped Double Bedrooms | Bespoke Bathroom & En-Suite Shower Wet Room | EPC-B | Comfort Cooling & Heating To Reception & Bedrooms | 24hr Concierge, Residents Lounge, Pool, Jacuzzi, Steam | Residents Gym, Fitness Suite, Squash Court, Cinema | Close To The City & Easy Reach Of Canary Wharf

For more information about this property,
please call our Wapping branch on

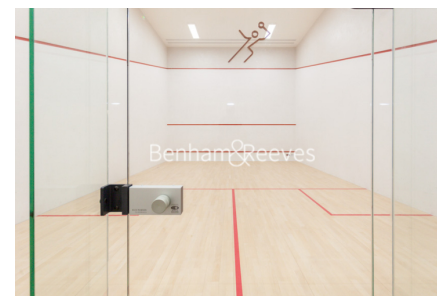
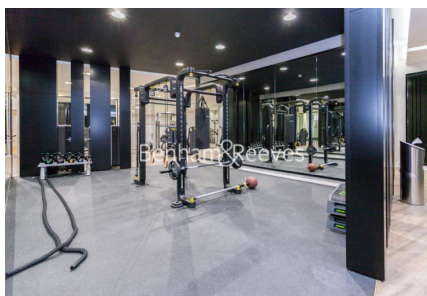
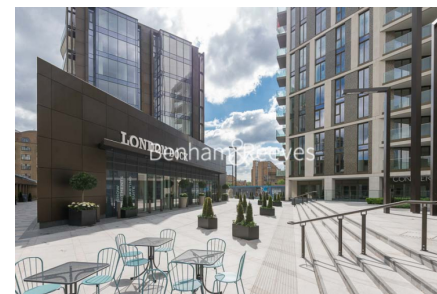
020 7680 8900

Redress & Client Money Protection :

Benham and Reeves are members of The Property Ombudsman redress scheme and have Client Money protection with ARLA Propertymark. You can find more information on our website at <https://www.benhamandreeves.com/membership/>



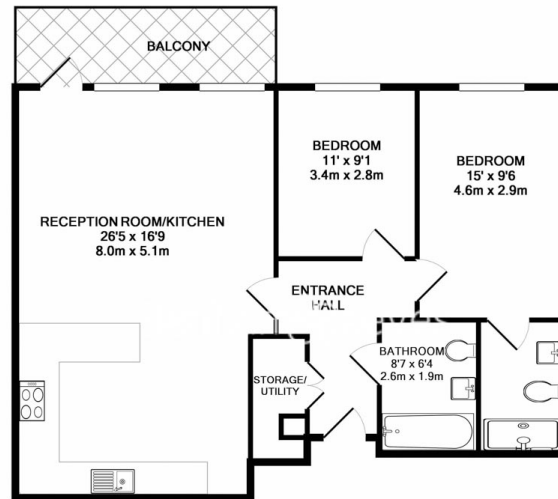
Benham&Reeves



Vaughan Way, Wapping, E1W

£785 per week, £3,402 per month + fees

www.benhams.com



TOTAL APPROX. FLOOR AREA 871 SQ.FT. (80.9 SQ.M.)
Whilst every attempt has been made to ensure the accuracy of the floor plan contained here, measurements of doors, windows, rooms and any other items are approximate and no responsibility is taken for any error, omission, or mis-statement. This plan is for illustrative purposes only and should be used as such by any prospective purchaser. The services, systems and appliances shown have not been tested and no guarantee as to their operability or efficiency can be given.
Made with Metropix ©2018

| Score | Energy rating | Current | Potential |
|-------|---------------|---------|-----------|
| 92+ | A | | |
| 81-91 | B | 84 B | 84 B |
| 69-80 | C | | |
| 55-68 | D | | |
| 39-54 | E | | |
| 21-38 | F | | |
| 1-20 | G | | |

London branches open six days a week Mon - Sat

Canary Wharf | City | Colindale | Dartmouth Park | Ealing | Fulham
Hammersmith | Hampstead | Highgate | Hyde Park | Kensington | Kew
Knightsbridge | Nine Elms | Shoreditch | Southall | Surrey Quays
Wapping | Wembley | White City | Woolwich

International offices

China | Hong Kong SAR | India | Israel | Malaysia | Middle East | Pakistan
Qatar | Singapore | South Africa | Thailand | Turkey



Benham & Reeves