



Benham & Reeves

Cornwall Gardens, Kensington, SW7

£1,250 per week, £5,417 per month + fees

 2 Bedrooms  2 Bathrooms  Unfurnished

A tastefully presented apartment, with terrace, set in a stucco-fronted building, situated in a desirable address in South Kensington. Ideally placed for Gloucester Road and South Kensington Tube station (Circle, Piccadilly, and District lines)

Please [click here](#) for full detail

Property features

2 Bedrooms | 2 Bathrooms | Reception | Unfurnished | Kitchen | EPC-E | Wood Floors | Balcony and Access to Communal Gardens | Nearby Gloucester Road Tube Station

For more information about this property,
please call our Kensington branch on

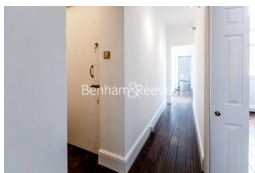
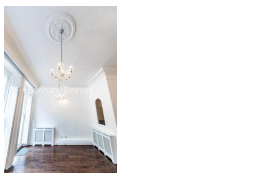
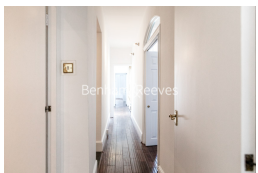
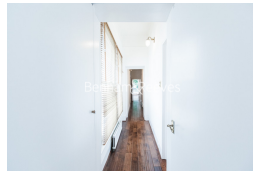
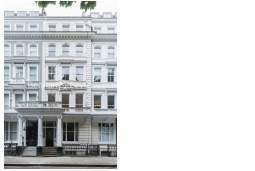
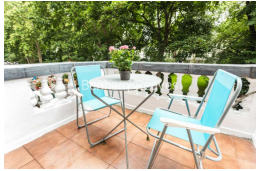
020 7938 3522

Redress & Client Money Protection :

Benham and Reeves are members of The Property Ombudsman redress scheme and have Client Money protection with ARLA Propertymark. You can find more information on our website at <https://www.benhams.com/membership/>



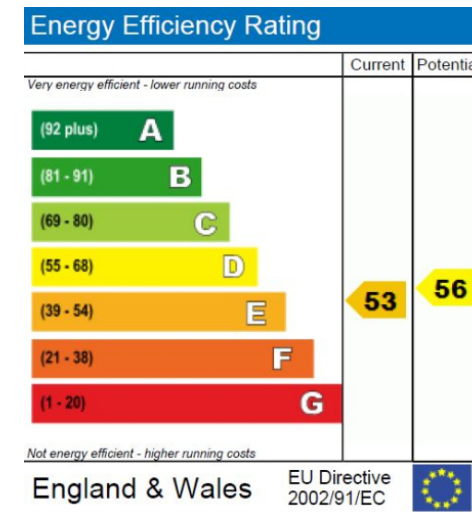
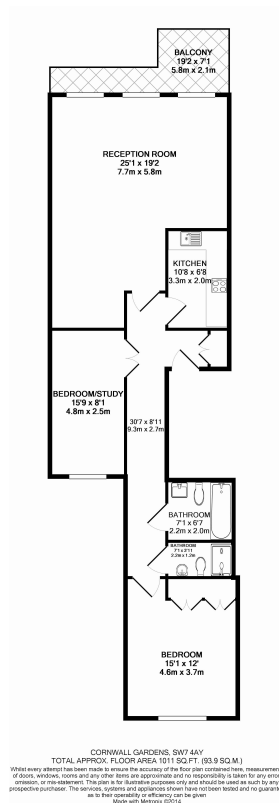
Benham & Reeves



Cornwall Gardens, Kensington, SW7

£1,250 per week, £5,417 per month + fees

www.benhams.com



London branches open six days a week Mon - Sat

Canary Wharf | City | Colindale | Dartmouth Park | Ealing | Fulham
Hammersmith | Hampstead | Highgate | Hyde Park | Kensington | Kew
Knightsbridge | Nine Elms | Shoreditch | Southall | Surrey Quays
Wapping | Wembley | White City | Woolwich

International offices

China | Hong Kong SAR | India | Indonesia | Qatar | Malaysia | Middle East |
Singapore | South Africa | Thailand | Turkey



Benham & Reeves