



Benham&Reeves

## South Kensington, Kensington, SW7

£975 per week, £4,225 per month + fees

 2 Bedrooms    2 Bathrooms    Furnished

An extremely well-presented spacious apartment, with lift access is situated in a desirable quiet street in South Kensington. Ideally located adjacent to Gloucester Road Underground Station.

Please [click here](#) for full detail

## Property features

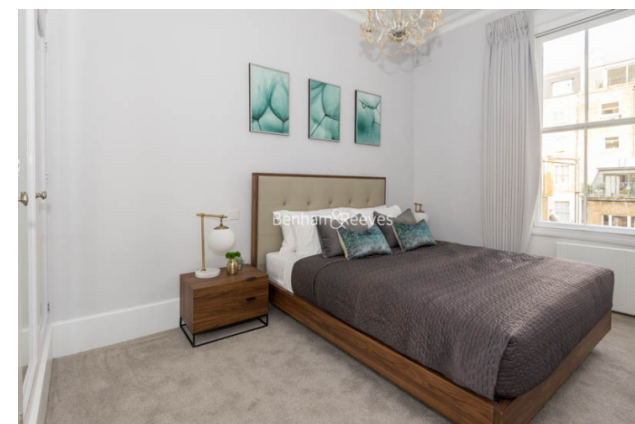
**Two Double Bedrooms | Two Bathrooms | Reception | Fitted Kitchen | Furnished | EPC-C | Wooden flooring | Close to Amenities | High Street Kensington Tube Station**

For more information about this property, please call our Kensington branch on

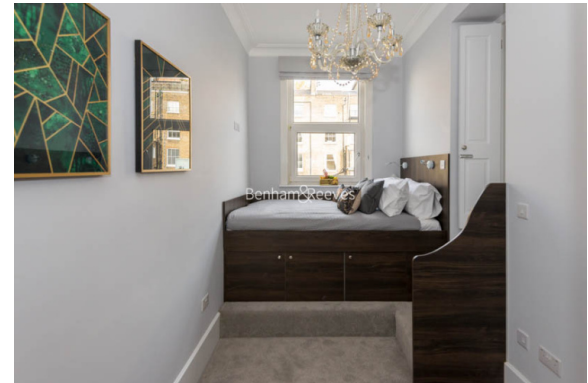
**020 7938 3522**

Redress & Client Money Protection :

Benham and Reeves are members of The Property Ombudsman redress scheme and have Client Money protection with ARLA Propertymark. You can find more information on our website at <https://www.benhamandreeves.com/membership/>



Benham & Reeves



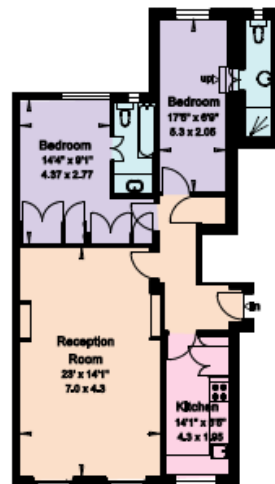


# South Kensington, Kensington, SW7

£975 per week, £4,225 per month + fees

www.benhams.com

Southwell Gardens  
London SW7  
Gross Internal Area = 81.5 sq. metres  
876 sq. feet



Second Floor

Energy Efficiency Rating		
	Current	Potential
Very energy efficient - lower running costs		
(92 plus) <b>A</b>		
(81-91) <b>B</b>		
(69-80) <b>C</b>	70	72
(55-68) <b>D</b>		
(39-54) <b>E</b>		
(21-38) <b>F</b>		
(1-20) <b>G</b>		
Not energy efficient - higher running costs		
England & Wales	EU Directive 2002/91/EC	

## London branches open six days a week Mon - Sat

Canary Wharf | City | Colindale | Dartmouth Park | Ealing | Fulham  
Hammersmith | Hampstead | Highgate | Hyde Park | Kensington | Kew  
Knightsbridge | Nine Elms | Shoreditch | Southall | Surrey Quays  
Wapping | Wembley | White City | Woolwich

## International offices

China | Hong Kong SAR | India | Indonesia | Qatar | Malaysia | Middle East | Pakistan  
Singapore | South Africa | Thailand | Turkey



Benham & Reeves