



Benham & Reeves

Stanhope Gardens, Kensington, SW7

£925 per week, £4,008 per month + fees

🛏️ 2 Bedrooms 🚿 2 Bathrooms 🛋️ Furnished

A superb 3rd floor apartment situated in a desirable elegant converted Georgian Period building perfectly located for South Kensington & Gloucester Road Stations .

Please [click here](#) for full detail

Property features

2 Double Bedrooms | 2 Bathrooms | East-Facing Reception | Furnished | Fully-Fitted Kitchen | EPC-C | 904 sq ft | Lift | Porter | Nearby south Kensington Station

For more information about this property,
please call our Kensington branch on

020 7938 3522

Redress & Client Money Protection :

Benham and Reeves are members of The Property Ombudsman redress scheme and have Client Money protection with ARLA Propertymark. You can find more information on our website at <https://www.benhamandreeves.com/membership/>



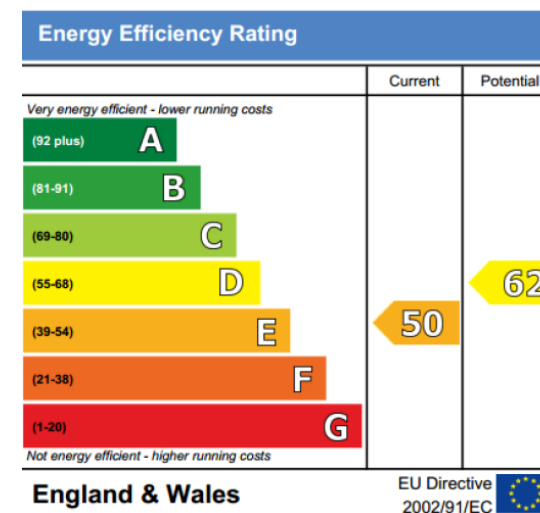
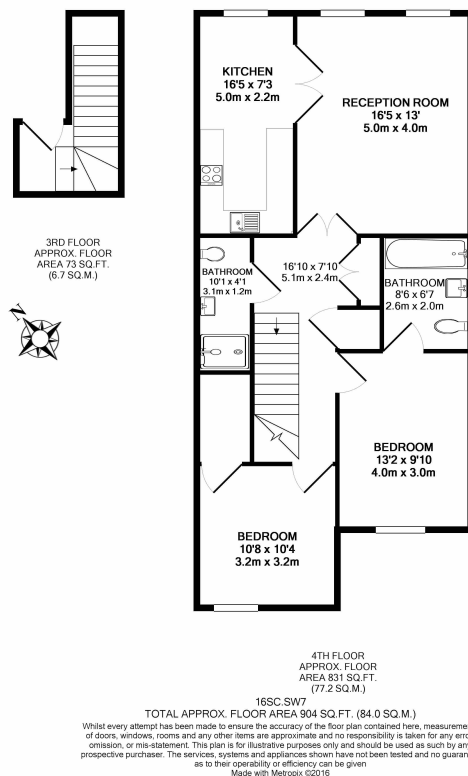
Benham&Reeves



Stanhope Gardens, Kensington, SW7

£925 per week, £4,008 per month + fees

www.benhams.com



London branches open six days a week Mon - Sat

Canary Wharf | City | Colindale | Dartmouth Park | Ealing | Fulham
Hammersmith | Hampstead | Highgate | Hyde Park | Kensington | Kew
Knightsbridge | Nine Elms | Shoreditch | Southall | Surrey Quays
Wapping | Wembley | White City | Woolwich

International offices

China | Hong Kong SAR | India | Indonesia | Qatar | Malaysia | Middle East | Pakistan
Singapore | South Africa | Thailand | Turkey



Benham & Reeves