



Benham & Reeves

Holland Park, Kensington, W11

£5,600 per week, £24,267 per month + fees

 5 Bedrooms  5 Bathrooms  Furnished

A large, spacious luxury Maisonette with garden, situated one of the most sought after addresses close to Holland Park Station (Central Line).

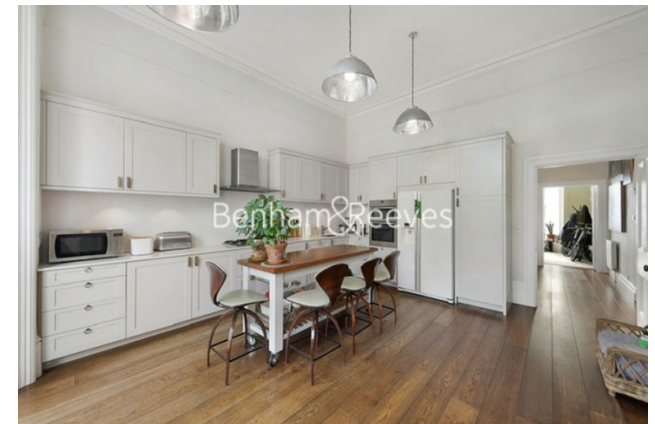
Please [click here](#) for full detail

Property features

Holland Park | Garden | Perfect for Families | Dining Room | Great nearby Schools | EPC-D | Recently Decorated | 5 Bedrooms And 5 Bathrooms | 2 Receptions | Holland Park station (Central Line) and Notting Hill Gate

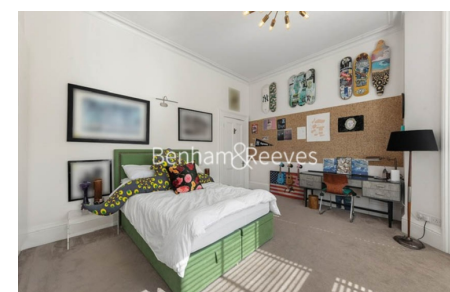
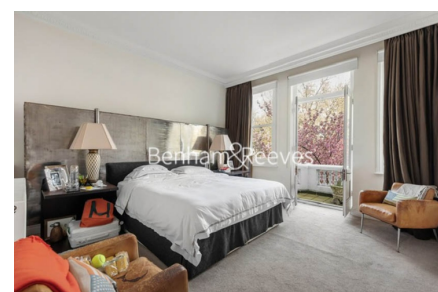
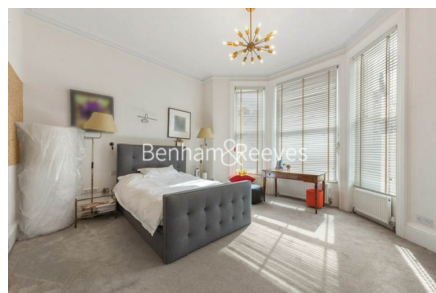
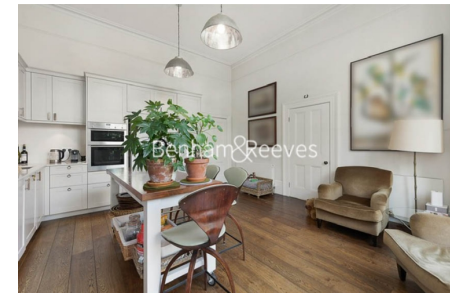
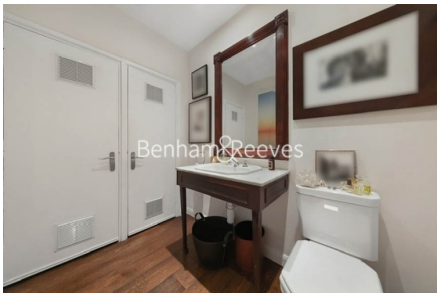
For more information about this property,
please call our Kensington branch on

020 7938 3522



Redress & Client Money Protection :
Benham and Reeves are members of The Property Ombudsman redress scheme and have Client Money protection with ARLA Propertymark.
You can find more information on our website at <https://www.benhams.com/membership/>

Benham&Reeves



Holland Park, Kensington, W11

£5,600 per week, £24,267 per month + fees

www.benhams.com

Score	Energy rating	Current	Potential
92+	A		
81-91	B		83 B
69-80	C		
55-68	D	55 D	
39-54	E		
21-38	F		
1-20	G		

London branches open six days a week Mon - Sat

Canary Wharf | City | Colindale | Dartmouth Park | Ealing | Fulham
Hammersmith | Hampstead | Highgate | Hyde Park | Kensington | Kew
Knightsbridge | Nine Elms | Shoreditch | Southall | Surrey Quays
Wapping | Wembley | White City | Woolwich

International offices

China | Hong Kong SAR | India | Indonesia | Qatar | Malaysia | Middle East | Pakistan
Singapore | South Africa | Thailand | Turkey

