



Benham & Reeves

## **Radnor Terrace, Kensington, W14**

£1,500 per week, £6,500 per month + fees

 3 Bedrooms    2 Bathrooms     
Furnished/UnFurnished

Stylish and tastefully presented large 5th floor apartment situated in a prestigious development with luxury amenities. Located within walking distance from Kensington Olympia Underground and Overground Stations.

Please [click here](#) for full detail

## Property features

**3 Bedrooms | 2 Bathrooms | Reception | Furn/Unfurn | Fitted Kitchen | EPC-B | 24h Concierge | Leisure center | Nearby Kensington Olympia Station**

For more information about this property,  
please call our Kensington branch on

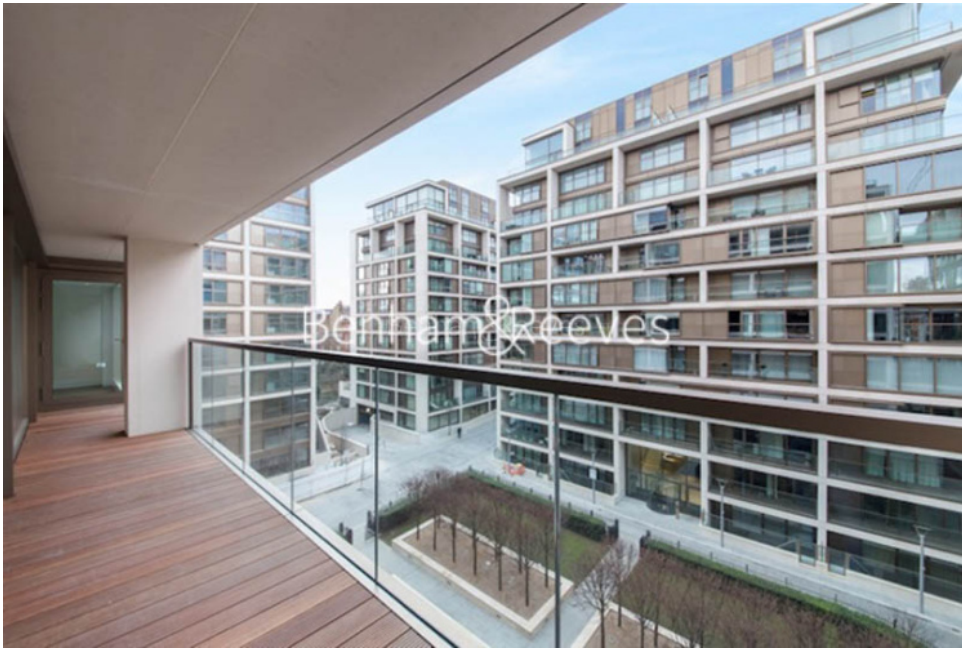
**020 7938 3522**

Redress & Client Money Protection :

Benham and Reeves are members of The Property Ombudsman redress scheme and have Client Money protection with ARLA Propertymark. You can find more information on our website at <https://www.benhamandreeves.com/membership/>



**Benham & Reeves**

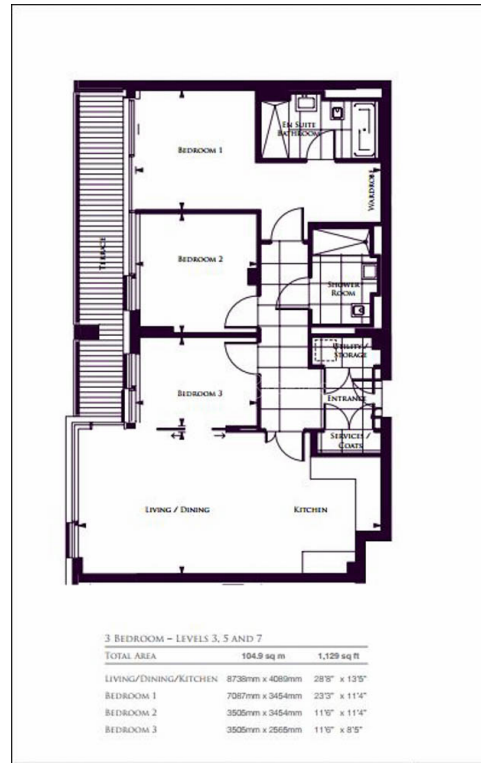




# Radnor Terrace, Kensington, W14

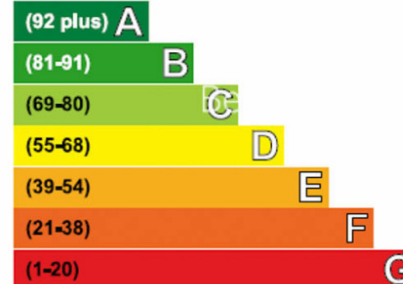
£1,500 per week, £6,500 per month + fees

[www.benhams.com](http://www.benhams.com)



## Energy Efficiency Rating

Very energy efficient - lower running costs



Current	Potential
85	85

Not energy efficient - higher running costs

## London branches open six days a week Mon - Sat

Canary Wharf | City | Colindale | Dartmouth Park | Ealing | Fulham  
Hammersmith | Hampstead | Highgate | Hyde Park | Kensington | Kew  
Knightsbridge | Nine Elms | Shoreditch | Southall | Surrey Quays  
Wapping | Wembley | White City | Woolwich

## International offices

China | Hong Kong SAR | India | Indonesia | Qatar | Malaysia | Middle East | Pakistan  
Singapore | South Africa | Thailand | Turkey



Benham & Reeves