



Benham & Reeves

**Kensington High Street, Kensington, W14**

£950 per week, £4,117 per month + fees

 2 Bedrooms    2 Bathrooms    Furnished

A superb, luxury ground floor apartment, with bespoke swimming pool and a range of fitness and spa facilities, situated in a prestigious Development. Located in the heart of one of London's most sought-after locations, the Royal Borough of Kensington and Chelsea. With secure parking and within walking distance to Kensington Olympia.

Please [click here](#) for full detail

## Property features

**2 Bedrooms | 2 Bathrooms | Open Plan Reception | Furnished | Fitted Kitchen | EPC-B | 24hr Porter | Comfort Cooling | Nearby Kensington Olympia Station**

For more information about this property,  
please call our Property Management branch on

**020 7319 9740**

Redress & Client Money Protection :

Benham and Reeves are members of The Property Ombudsman redress scheme and have Client Money protection with ARLA Propertymark. You can find more information on our website at <https://www.benhamandreeves.com/membership/>



Benham & Reeves

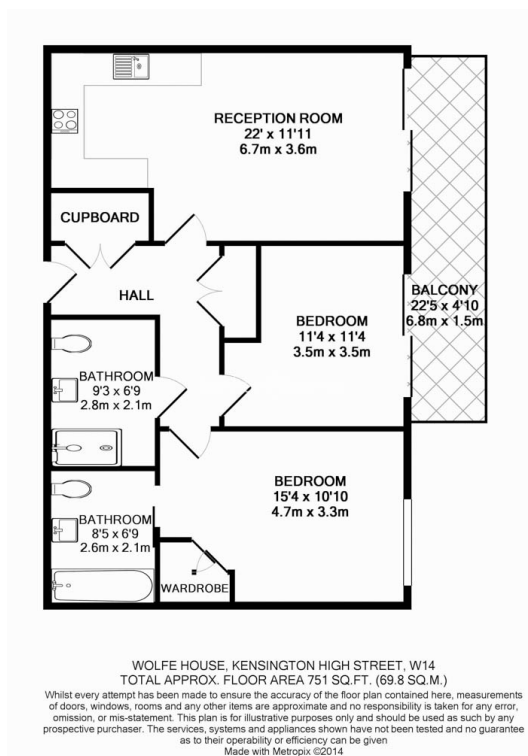




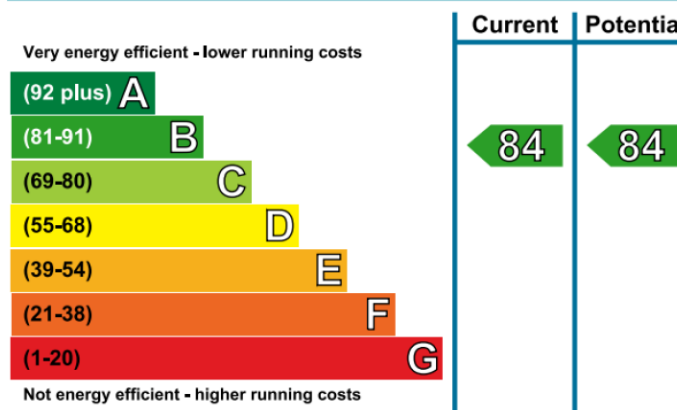
# Kensington High Street, Kensington, W14

£950 per week, £4,117 per month + fees

www.benhams.com



## Energy Efficiency Rating



## London branches open six days a week Mon - Sat

Canary Wharf | City | Colindale | Dartmouth Park | Ealing | Fulham  
Hammersmith | Hampstead | Highgate | Hyde Park | Kensington | Kew  
Knightsbridge | Nine Elms | Shoreditch | Southall | Surrey Quays  
Wapping | Wembley | White City | Woolwich

## International offices

China | Hong Kong SAR | India | Indonesia | Qatar | Malaysia | Middle East |  
Singapore | South Africa | Thailand | Turkey



Benham & Reeves