



Benham & Reeves

## **Bridgeman House, Kensington, W14**

£1,615 per week, £7,000 per month + fees

 3 Bedrooms    2 Bathrooms    Furnished

Luxury spacious apartment situated in a desirable development with parking and 24/7 Concierge located in the one of the most sought after areas in London, close to Holland park and Kensington Olympia (District) underground and Overground stations.

Please [click here](#) for full detail

## Property features

**Luxury 3 bedroom, 2 bathroom apartment | 5th Floor with lift | Open-plan kitchen/reception | Private balcony | 24 hour concierge | EPC- B | Underground parking | Gym, leisure suite & cinema | Kensington Olympia | High St Kensington & West Kensington**

For more information about this property,  
please call our Kensington branch on

**020 7938 3522**

Redress & Client Money Protection :

Benham and Reeves are members of The Property Ombudsman redress scheme and have Client Money protection with ARLA Propertymark. You can find more information on our website at <https://www.benhams.com/membership/>



Benham & Reeves

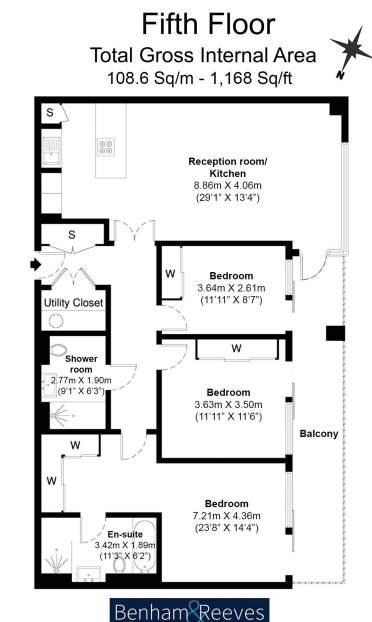




# Bridgeman House, Kensington, W14

£1,615 per week, £7,000 per month + fees

www.benhams.com



Floor Plan measurements are approximate and are for illustrative purposes only. While we do not doubt the floor plans accuracy, we make no guarantee, warranty or representation as to the accuracy and completeness of the floor plan.

Score	Energy rating	Current	Potential
92+	A		
81-91	B	85 B	85 B
69-80	C		
55-68	D		
39-54	E		
21-38	F		
1-20	G		

## London branches open six days a week Mon - Sat

Canary Wharf | City | Colindale | Dartmouth Park | Ealing | Fulham  
Hammersmith | Hampstead | Highgate | Hyde Park | Kensington | Kew  
Knightsbridge | Nine Elms | Shoreditch | Southall | Surrey Quays  
Wapping | Wembley | White City | Woolwich

## International offices

China | Hong Kong SAR | India | Indonesia | Qatar | Malaysia | Middle East |  
Singapore | South Africa | Thailand | Turkey



Benham & Reeves