



Benham & Reeves

## **Beckford Close, Kensington, W14**

£1,100 per week, £4,767 per month + fees

 3 Bedrooms    3 Bathrooms     
Furnished/UnFurnished

A bright and spacious air-conditioned apartment set over 7th and 8th floors, set in a sought-after development close to the amenities of Kensington. The property is a brief walk from Earl's Court (District and Piccadilly lines) underground station.

Please [click here](#) for full detail

## Property features

**3 Bedrooms | 3 Bathrooms | Reception | Furn/Unfurn | Fitted Kitchen | EPC-C | Underground parking | Gym | Porter | Nearby Earls Court Tube Station**

For more information about this property,  
please call our Kensington branch on

**020 7938 3522**



Redress & Client Money Protection :

Benham and Reeves are members of The Property Ombudsman redress scheme and have Client Money protection with ARLA Propertymark. You can find more information on our website at <https://www.benham.com/membership/>

**Benham & Reeves**

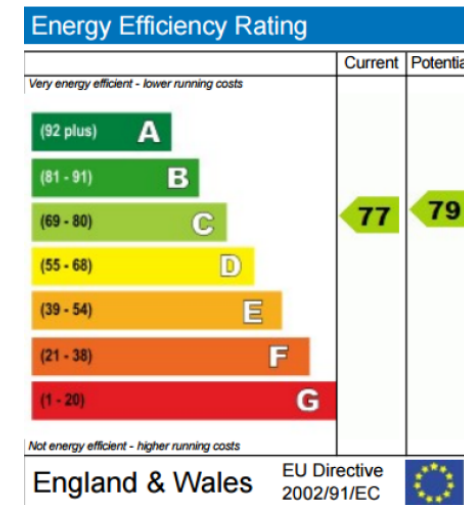
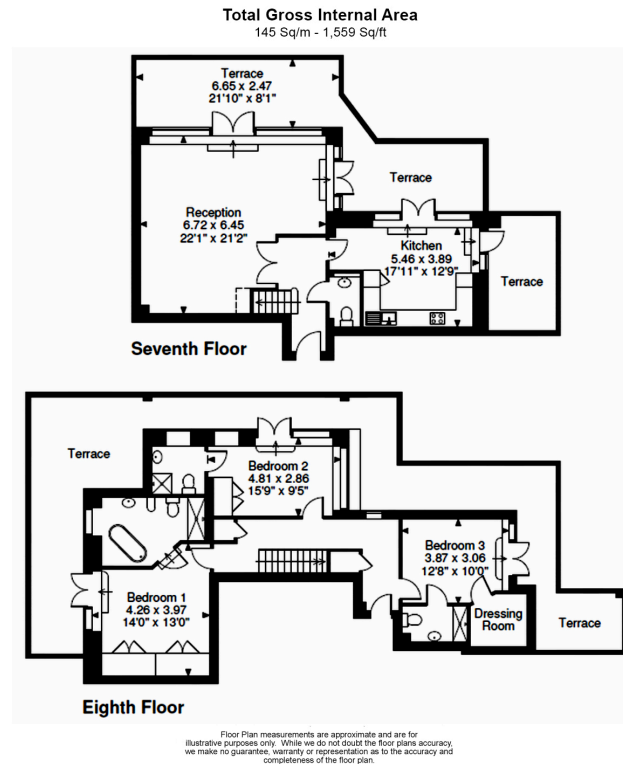




# Beckford Close, Kensington, W14

£1,100 per week, £4,767 per month + fees

www.benhams.com



## London branches open six days a week Mon - Sat

Canary Wharf | City | Colindale | Dartmouth Park | Ealing | Fulham  
Hammersmith | Hampstead | Highgate | Hyde Park | Kensington | Kew  
Knightsbridge | Nine Elms | Shoreditch | Southall | Surrey Quays  
Wapping | Wembley | White City | Woolwich

## International offices

China | Hong Kong SAR | India | Indonesia | Qatar | Malaysia | Middle East | Pakistan  
Singapore | South Africa | Thailand | Turkey



Benham & Reeves