



Benham & Reeves

Kensington Church Street, Kensington, W8

£675 per week, £2,925 per month + fees

 1 Bedroom  1 Bathroom  Furnished

A luxury second floor Helen Green interior designed apartment, with security intercom and lift, situated in a new, high-end development located seconds from Notting Hill Gate (Central, District and Circle lines).

Please [click here](#) for full detail

Property features

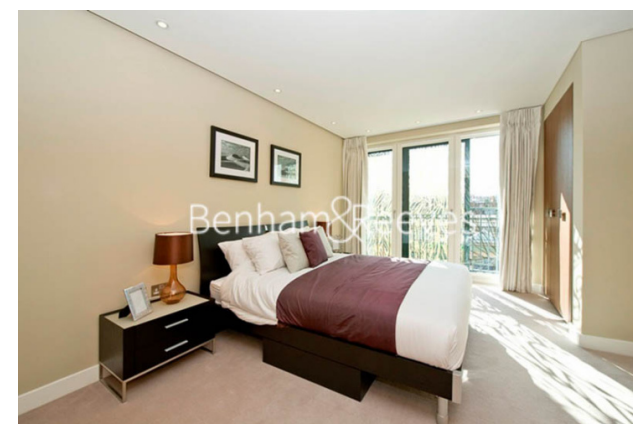
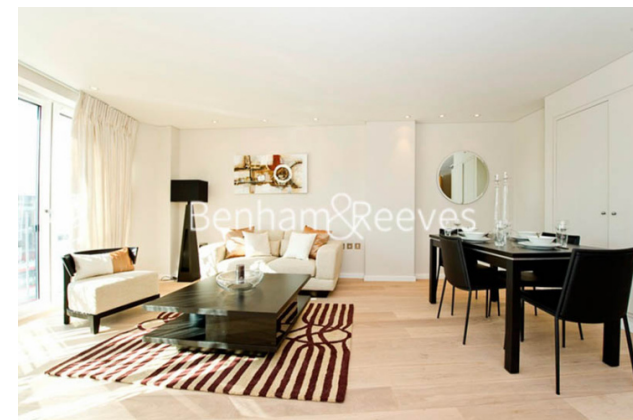
1 Double Bedroom | 1 Bathroom and Guest WC | Reception | Furnished | Porter | EPC-C | Parking by separate negotiation | Remote control lighting | Nearby High Street Kensington | Close to Notting Hill Gate station

For more information about this property,
please call our Kensington branch on

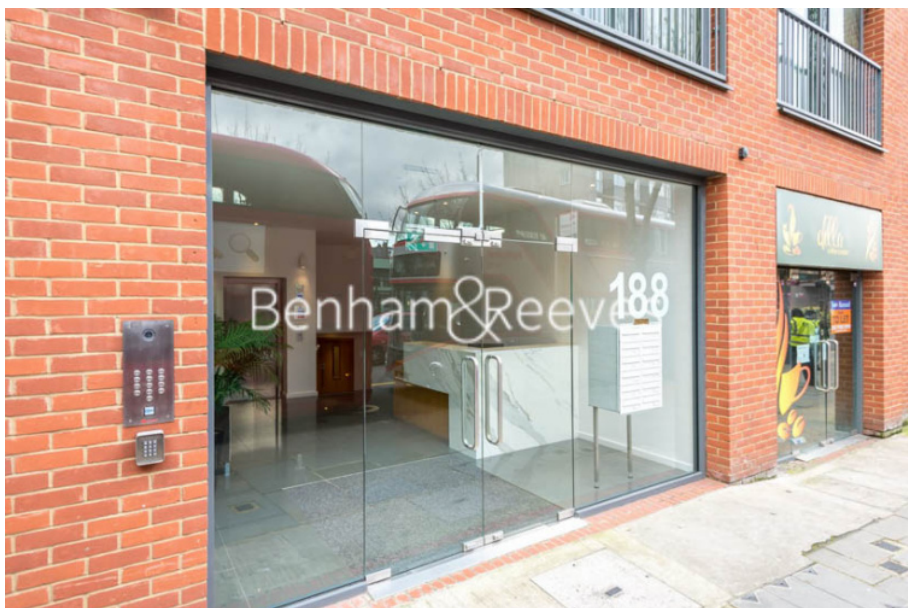
020 7938 3522

Redress & Client Money Protection :

Benham and Reeves are members of The Property Ombudsman redress scheme and have Client Money protection with ARLA Propertymark. You can find more information on our website at <https://www.benhams.com/membership/>



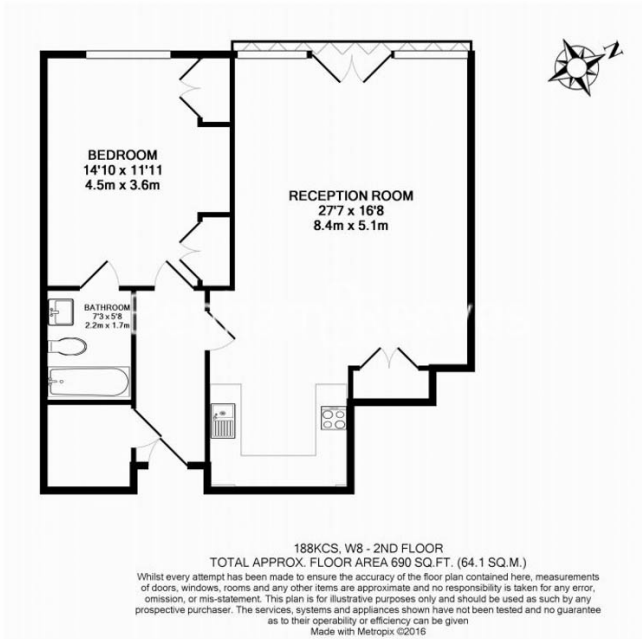
Benham & Reeves



Kensington Church Street, Kensington, W8

£675 per week, £2,925 per month + fees

www.benhams.com



| Score | Energy rating | Current | Potential |
|-------|---------------|---------|-----------|
| 92+ | A | | |
| 81-91 | B | | |
| 69-80 | C | 77 c | 77 c |
| 55-68 | D | | |
| 39-54 | E | | |
| 21-38 | F | | |
| 1-20 | G | | |

London branches open six days a week Mon - Sat

Canary Wharf | City | Colindale | Dartmouth Park | Ealing | Fulham
Hammersmith | Hampstead | Highgate | Hyde Park | Kensington | Kew
Knightsbridge | Nine Elms | Shoreditch | Southall | Surrey Quays
Wapping | Wembley | White City | Woolwich



International offices

China | Hong Kong SAR | India | Indonesia | Qatar | Malaysia | Middle East | Pakistan
Singapore | South Africa | Thailand | Turkey