



Benham & Reeves

## **Thornwood Gardens, Kensington, W8**

£2,700 per week, £11,700 per month + fees

 3 Bedrooms    3 Bathrooms     
Furnished/UnFurnished

Elegant apartment situated in one of Kensington's most prestigious residential developments. Set in beautiful maintained landscaped gardens with central fountain and a brief walk from Kensington High Street Station and Notting Hill Gate.

Please [click here](#) for full detail

## Property features

**Peaceful setting | Open plan living | Full time concierge service | Designated underground parking | Furnished or unfurnished | EPC-C | 24 hour security | Open plan kitchen | Close to local amenities | Neaby Holland Park Underground Station**

For more information about this property,  
please call our Kensington branch on

**020 7938 3522**

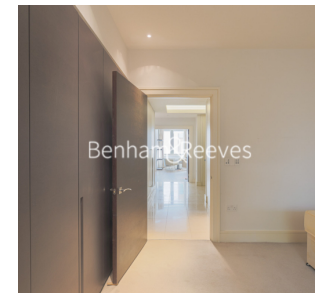
Redress & Client Money Protection :

Benham and Reeves are members of The Property Ombudsman redress scheme and have Client Money protection with ARLA Propertymark. You can find more information on our website at <https://www.benhamandreeves.com/membership/>



Benham&Reeves

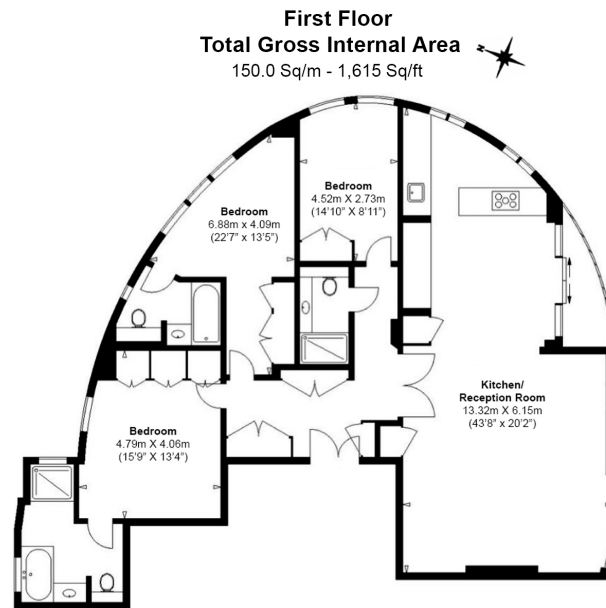




# Thornwood Gardens, Kensington, W8

£2,700 per week, £11,700 per month + fees

[www.benhams.com](http://www.benhams.com)



Floor Plan measurements are approximate and are for illustrative purposes only. While we do not doubt the floor plans accuracy, we make no guarantee, warranty or representation as to the accuracy and completeness of the floor plan.

Score	Energy rating	Current	Potential
92+	A		
81-91	B		84   B
69-80	C	76   C	
55-68	D		
39-54	E		
21-38	F		
1-20	G		

## London branches open six days a week Mon - Sat

Canary Wharf | City | Colindale | Dartmouth Park | Ealing | Fulham  
Hammersmith | Hampstead | Highgate | Hyde Park | Kensington | Kew  
Knightsbridge | Nine Elms | Shoreditch | Southall | Surrey Quays  
Wapping | Wembley | White City | Woolwich

## International offices

China | Hong Kong SAR | India | Indonesia | Qatar | Malaysia | Middle East |  
Singapore | South Africa | Thailand | Turkey



Benham & Reeves