



Benham & Reeves

Thornwood Gardens, Kensington, W8

£3,500 per week, £15,167 per month + fees

 4 Bedrooms  4 Bathrooms  Unfurnished

A stunning, large family apartment set over 3 floors with a large terrace, private garden and parking for two cars. Located close to Hyde Park, Holland Park and excellent Transport links.

Please [click here](#) for full detail

Property features

4 Double Bedrooms | 4 Bathrooms | Reception | Large terrace | Private garden | EPC-B | 24 hour concierge | Parking for 2 cars | Close to amenities | Nearby High Street Kensington tube and Nottinghill Gate

For more information about this property,
please call our Kensington branch on

020 7938 3522

Redress & Client Money Protection :

Benham and Reeves are members of The Property Ombudsman redress scheme and have Client Money protection with ARLA Propertymark. You can find more information on our website at <https://www.benhamandreeves.com/membership/>



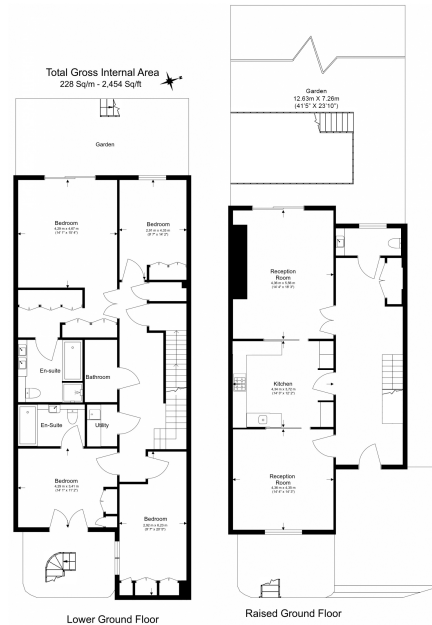
Benham&Reeves



Thornwood Gardens, Kensington, W8

£3,500 per week, £15,167 per month + fees

www.benhams.com



Floor Plan measurements are approximate and are for illustrative purposes only. While we do not doubt the floor plans accuracy, we make no guarantee, warranty or representation as to the accuracy and completeness of the floor plan.

Score	Energy rating	Current	Potential
92+	A		
81-91	B	82 B	82 B
69-80	C		
55-68	D		
39-54	E		
21-38	F		
1-20	G		

London branches open six days a week Mon - Sat

Canary Wharf | City | Colindale | Dartmouth Park | Ealing | Fulham
Hammersmith | Hampstead | Highgate | Hyde Park | Kensington | Kew
Knightsbridge | Nine Elms | Shoreditch | Southall | Surrey Quays
Wapping | Wembley | White City | Woolwich

International offices

China | Hong Kong SAR | India | Israel | Malaysia | Middle East | Pakistan
Qatar | Singapore | South Africa | Thailand | Turkey



Benham & Reeves