



Benham & Reeves

Lexham Gardens, Kensington, W8

£2,050 per week, £8,883 per month + fees

 3 Bedrooms  4 Bathrooms  Furnished

A spacious, fully refurbished, furnished split level apartment with en-suite bedrooms situated in a striking stucco building in a desirable street with access to a 40ft south-facing garden. Perfectly positioned for High Street Kensington Underground station (Circle and District lines).

Please [click here](#) for full detail

Property features

Three Bedrooms | Four Bathrooms | One Reception | Furnished | Pet Friendly | EPC-C | South Facing | Wood Flooring | Modern Finishes | High Street Kensington Underground station

For more information about this property,
please call our Kensington branch on

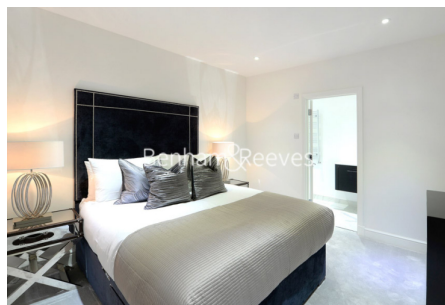
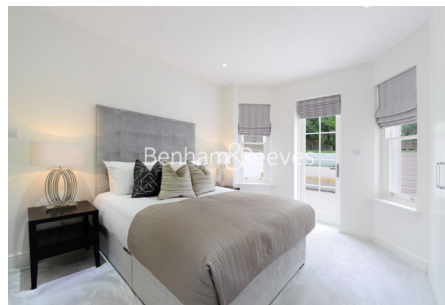
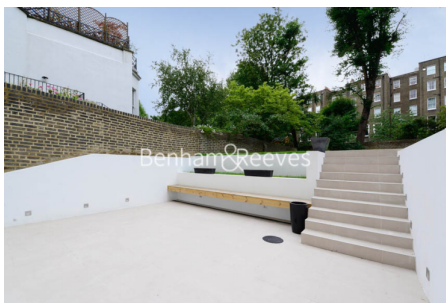
020 7938 3522

Redress & Client Money Protection :

Benham and Reeves are members of The Property Ombudsman redress scheme and have Client Money protection with ARLA Propertymark. You can find more information on our website at <https://www.benhamandreeves.com/membership/>



Benham & Reeves



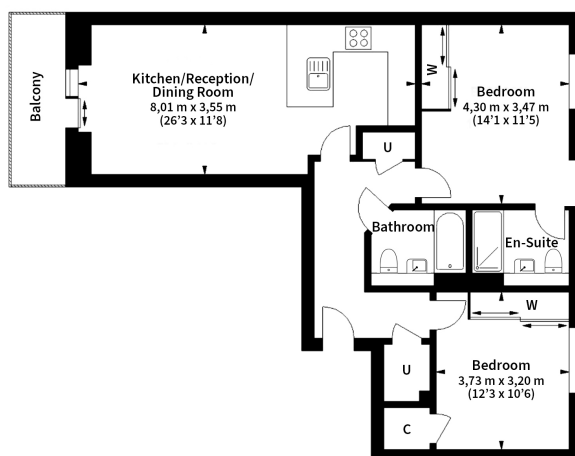
Lexham Gardens, Kensington, W8

£2,050 per week, £8,883 per month + fees

www.benhams.com

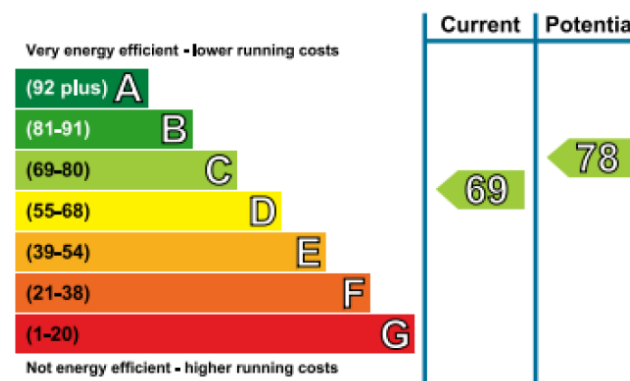
4th Floor

Total Gross Internal Area
76.03 Sq/m - 818 Sq/ft



Floor Plan measurements are approximate and are for illustrative purposes only. While we do not doubt the floor plans accuracy, we make no guarantee, warranty or representation as to the accuracy and completeness of the floor plan.

Energy Efficiency Rating



London branches open six days a week Mon - Sat

Canary Wharf | City | Colindale | Dartmouth Park | Ealing | Fulham
Hammersmith | Hampstead | Highgate | Hyde Park | Kensington | Kew
Knightsbridge | Nine Elms | Shoreditch | Southall | Surrey Quays
Wapping | Wembley | White City | Woolwich

International offices

China | Hong Kong SAR | India | Israel | Malaysia | Middle East | Pakistan
Qatar | Singapore | South Africa | Thailand | Turkey



Benham & Reeves