



Benham & Reeves

Young Street, Kensington, W8

£1,600 per week, £6,933 per month + fees

 2 Bedrooms  2 Bathrooms  Furnished

Stunning duplex apartment based in the heart of Kensington offering top class amenities and the ultimate sophisticated modern living.

Please [click here](#) for full detail

Property features

Two Bedrooms | Two Bathrooms | 24-hour security | Gym | Close to local amenities | EPC-B | Library | Open plan living | Air Conditioning | Short walk to underground stations

For more information about this property,
please call our Property Management branch on

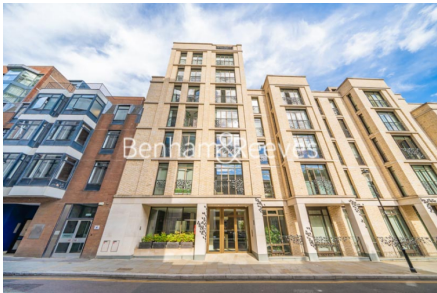
020 7319 9740

Redress & Client Money Protection :

Benham and Reeves are members of The Property Ombudsman redress scheme and have Client Money protection with ARLA Propertymark. You can find more information on our website at <https://www.benhamandreeves.com/membership/>



Benham&Reeves



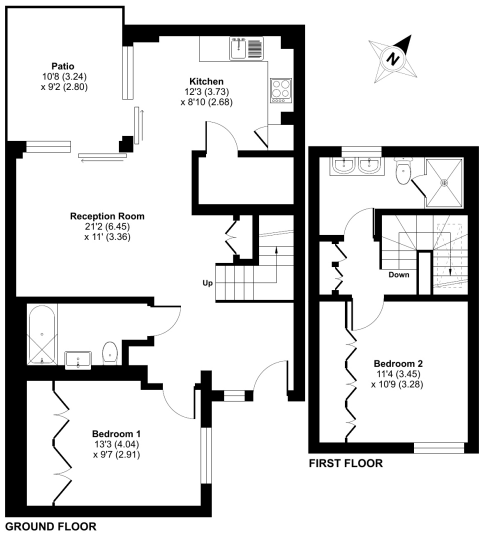
Young Street, Kensington, W8

£1,600 per week, £6,933 per month + fees

www.benhams.com

Young Street, The Gardens, London, W8

Approximate Area = 855 sq ft / 79.4 sq m
For identification only - Not to scale



 RICS Certified Property Measurement
Floor plan produced in accordance with RICS Property Measurement Standards incorporating International Property Measurement Standards (IPMS) (Residential). © nebecon 2024. Produced for Benham & Reeves. REF: 1175487

Score	Energy rating	Current	Potential
92+	A		
81-91	B	83 B	83 B
69-80	C		
55-68	D		
39-54	E		
21-38	F		
1-20	G		

London branches open six days a week Mon - Sat

Canary Wharf | City | Colindale | Dartmouth Park | Ealing | Fulham
Hammersmith | Hampstead | Highgate | Hyde Park | Kensington | Kew
Knightsbridge | Nine Elms | Shoreditch | Southall | Surrey Quays
Wapping | Wembley | White City | Woolwich

International offices

China | Hong Kong SAR | India | Indonesia | Qatar | Malaysia | Middle East |
Singapore | South Africa | Thailand | Turkey

