



Benham & Reeves

Somerset Court, Kensington, W8

£925 per week, £4,008 per month + fees

 2 Bedrooms  1 Bathroom  Furnished

Close to High Street Kensington and Holland Park, the newly re-decorated apartments benefit from a lift and lots of natural light with some apartments benefiting from use of a beautiful south facing landscaped garden.

Please [click here](#) for full detail

Property features

Two Bedroom | One Bathroom | Open Plan Living Area | Garden | Self contained | EPC-D | Pet friendly | 24 hour maintenance service | Stucco-fronted Victorian building with lift access | High street Kensington Station.

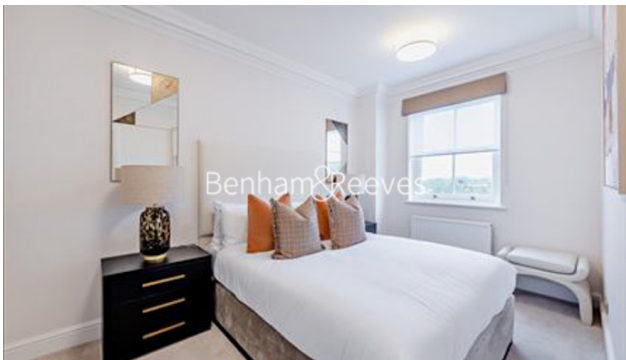
For more information about this property,
please call our Kensington branch on

020 7938 3522



Redress & Client Money Protection :
Benham and Reeves are members of The Property Ombudsman redress scheme and have Client Money protection with ARLA Propertymark.
You can find more information on our website at <https://www.benhamandreeves.com/membership/>

Benham & Reeves



Somerset Court, Kensington, W8

£925 per week, £4,008 per month + fees

www.benhams.com

Score	Energy rating	Current	Potential
92+	A		
81-91	B		
69-80	C		72 C
55-68	D	58 D	
39-54	E		
21-38	F		
1-20	G		

London branches open six days a week Mon - Sat

Canary Wharf | City | Colindale | Dartmouth Park | Ealing | Fulham
Hammersmith | Hampstead | Highgate | Hyde Park | Kensington | Kew
Knightsbridge | Nine Elms | Shoreditch | Southall | Surrey Quays
Wapping | Wembley | White City | Woolwich

International offices

China | Hong Kong SAR | India | Indonesia | Qatar | Malaysia | Middle East |
Singapore | South Africa | Thailand | Turkey

