



Benham & Reeves

Kensington Court, Kensington, W8

£625 per week, £2,708 per month + fees

🛏 1 Bedroom 🚿 1 Bathroom 🛋 Furnished

A stunning, large 4th floor situated in a well-maintained portered building just South of Kensington High Street. Close to Kensington Gardens.

Please [click here](#) for full detail

Property features

Large reception | Exclusive Kensington location | Furnished | Lift | Porter | EPC-D | Located on the first floor | Moments from Kensington High Street | High Street Kensington Station

For more information about this property, please call our Kensington branch on

020 7938 3522



Redress & Client Money Protection :
Benham and Reeves are members of The Property Ombudsman redress scheme and have Client Money protection with ARLA Propertymark.
You can find more information on our website at <https://www.benhams.com/membership/>

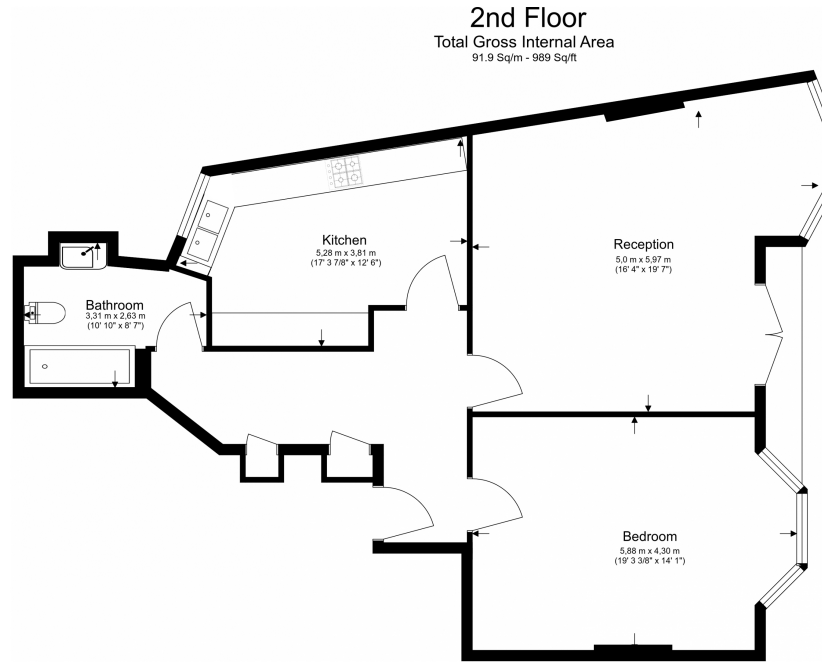
Benham & Reeves



Kensington Court, Kensington, W8

£625 per week, £2,708 per month + fees

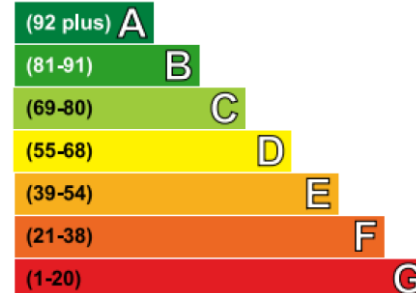
www.benhams.com



Floor Plan measurements are approximate and are for illustrative purposes only. While we do not doubt the floor plans accuracy, we make no guarantee, warranty or representation as to the accuracy and completeness of the floor plan.

Energy Efficiency Rating

Very energy efficient - lower running costs



Not energy efficient - higher running costs

Current	Potential
68	81

London branches open six days a week Mon - Sat

Canary Wharf | City | Colindale | Dartmouth Park | Ealing | Fulham
Hammersmith | Hampstead | Highgate | Hyde Park | Kensington | Kew
Knightsbridge | Nine Elms | Shoreditch | Southall | Surrey Quays
Wapping | Wembley | White City | Woolwich

International offices

China | Hong Kong SAR | India | Indonesia | Qatar | Malaysia | Middle East |
Singapore | South Africa | Thailand | Turkey



Benham & Reeves