



Benham & Reeves

Kensington Court Mews, Kensington, W8

£462 per week, £2,002 per month + fees

 Studio  1 Bathroom  Furnished

A charming studio apartment set in a beautiful Victorian period building in Kensington, a short distance from High Street Kensington Underground Station (District and Circle Lines).

Please [click here](#) for full detail

Property features

Studio | Bathroom | First Floor | 61 Sq Ft | Close to Station | EPC-D | Furnished | Eat-In Kitchen | Bath with Overhead Shower | Nearest Station - High Street Kensington (District & Circle

For more information about this property,
please call our Kensington branch on

020 7938 3522

Redress & Client Money Protection :

Benham and Reeves are members of The Property Ombudsman redress scheme and have Client Money protection with ARLA Propertymark. You can find more information on our website at <https://www.benhamandreeves.com/membership/>



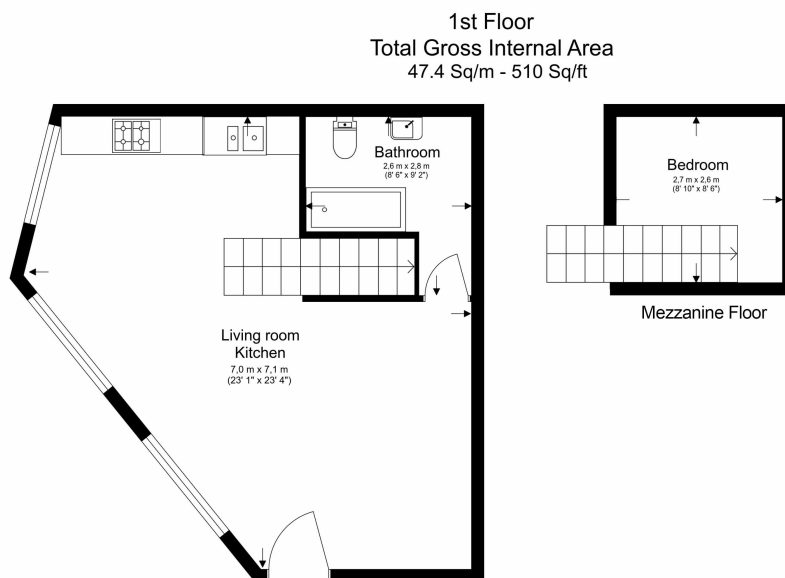
Benham&Reeves



Kensington Court Mews, Kensington, W8

£462 per week, £2,002 per month + fees

www.benhams.com



Floor Plan measurements are approximate and are for illustrative purposes only. While we do not doubt the floor plans accuracy, we make no guarantee, warranty or representation as to the accuracy and completeness of the floor plan.

Score	Energy rating	Current	Potential
92+	A		
81-91	B		
69-80	C		
55-68	D	55 D	75 C
39-54	E		
21-38	F		
1-20	G		

London branches open six days a week Mon - Sat

Canary Wharf | City | Colindale | Dartmouth Park | Ealing | Fulham
Hammersmith | Hampstead | Highgate | Hyde Park | Kensington | Kew
Knightsbridge | Nine Elms | Shoreditch | Southall | Surrey Quays
Wapping | Wembley | White City | Woolwich

International offices

China | Hong Kong SAR | India | Indonesia | Qatar | Malaysia | Middle East | Pakistan
Singapore | South Africa | Thailand | Turkey



Benham & Reeves