



Benham & Reeves

Lexham Gardens, Kensington, W8

£825 per week, £3,575 per month + fees

 2 Bedrooms  2 Bathrooms  Furnished

Stylish 1st floor apartment, with wood flooring and two balconies, situated in an attractive period conversion close to the amenities and transport of Gloucester Road, South Kensington, and Kensington High Street.

Please [click here](#) for full detail

Property features

Two double bedrooms | Ensuite bathroom | Private balcony | Open-plan kitchen/reception | High Ceilings | EPC- C | First floor | Wooden floors | High St Kensington & West Kensington

For more information about this property,
please call our Kensington branch on

020 7938 3522



Redress & Client Money Protection :

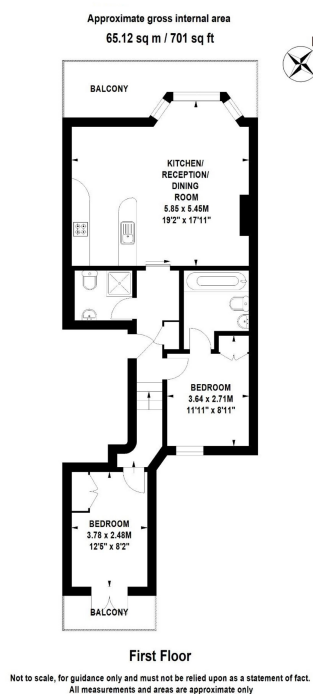
Benham and Reeves are members of The Property Ombudsman redress scheme and have Client Money protection with ARLA Propertymark. You can find more information on our website at <https://www.benhams.com/membership/>

Benham & Reeves

Lexham Gardens, Kensington, W8

£825 per week, £3,575 per month + fees

www.benhams.com



Score	Energy rating	Current	Potential
92+	A		
81-91	B		
69-80	C	69 C	79 C
55-68	D		
39-54	E		
21-38	F		
1-20	G		

Activate 1

London branches open six days a week Mon - Sat

Canary Wharf | City | Colindale | Dartmouth Park | Ealing | Fulham
Hammersmith | Hampstead | Highgate | Hyde Park | Kensington | Kew
Knightsbridge | Nine Elms | Shoreditch | Southall | Surrey Quays
Wapping | Wembley | White City | Woolwich

International offices

China | Hong Kong SAR | India | Indonesia | Qatar | Malaysia | Middle East |
Singapore | South Africa | Thailand | Turkey



Benham & Reeves