



Benham & Reeves

Young Street, Imperial House, W8

£3,650 per week, £15,817 per month + fees

 3 Bedrooms  3 Bathrooms 
Furnished/UnFurnished

An outstanding, spacious 5th and 6th floor air-conditioned penthouse set within a perfectly positioned modern building in a great location just south of Kensington High Street. Minutes from High Street Kensington Underground station (District and Circle Lines), the open spaces of Kensington Gardens and Hyde Park.

Please [click here](#) for full detail

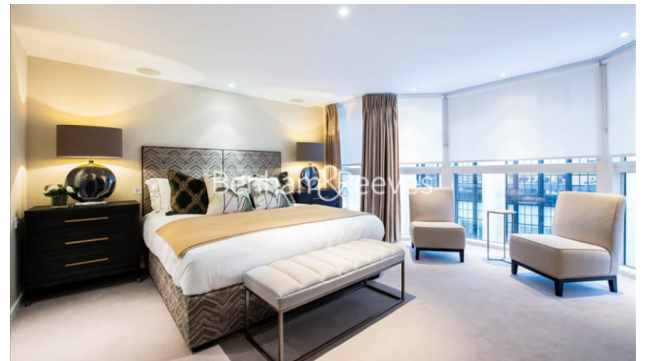
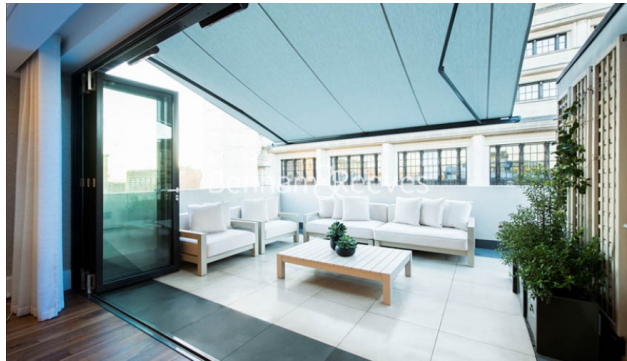
Property features

3 Bedrooms | 3 Bathrooms | Reception | Furn/Unfurn | Fitted Kitchen | EPC-C | Wood Floors, Terrace | Under Floor Heating | Nearby High Street Kensington Tube Station

For more information about this property,
please call our Kensington branch on

020 7938 3522

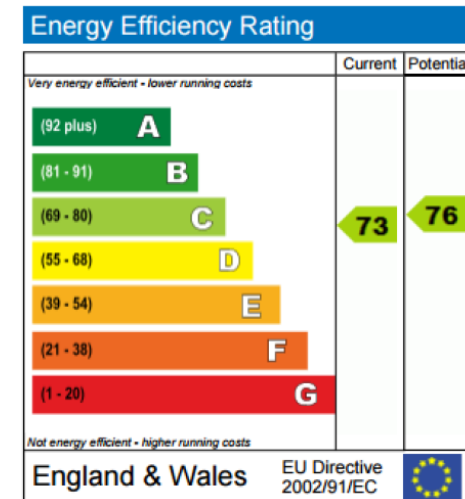
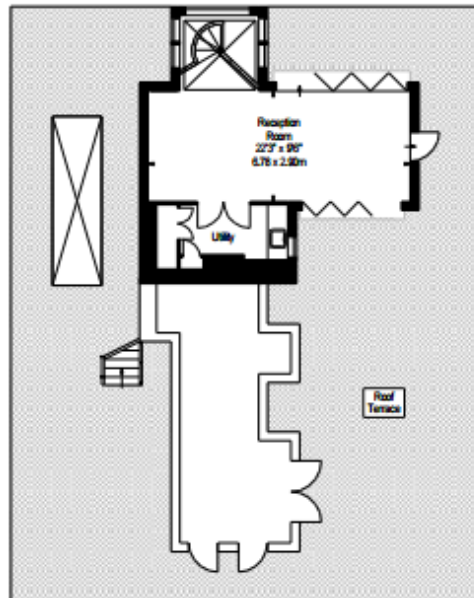
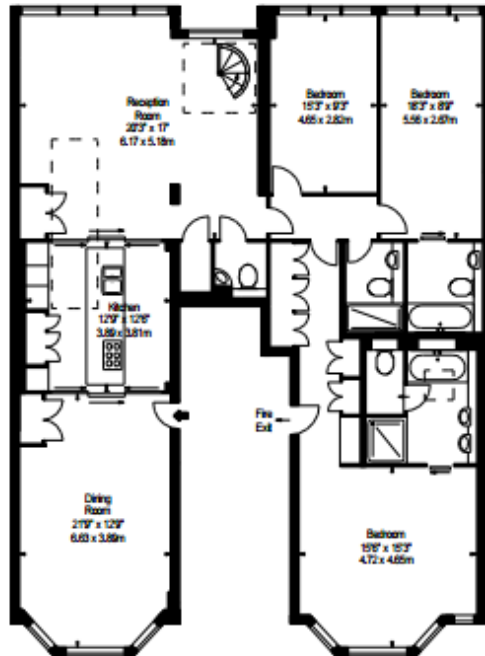




Young Street, Imperial House, W8

£3,650 per week, £15,817 per month + fees

www.benhams.com



London branches open six days a week Mon - Sat

Canary Wharf | City | Colindale | Dartmouth Park | Ealing | Fulham
 Hammersmith | Hampstead | Highgate | Hyde Park | Kensington | Kew
 Knightsbridge | Nine Elms | Shoreditch | Southall | Surrey Quays
 Wapping | Wembley | White City | Woolwich

International offices

China | Hong Kong SAR | India | Indonesia | Qatar | Malaysia | Middle East | Pakistan
 Singapore | South Africa | Thailand | Turkey



Benham & Reeves