



Benham & Reeves

## **Lancer Square, Kensington, W8**

£995 per week, £4,312 per month + fees

 1 Bedroom    1 Bathroom    Unfurnished

Luxury apartment situated in a prestigious development in Kensington, with exclusive private residents' health club, and within walking distance to Kensington Gardens offering fabulous open spaces

Please [click here](#) for full detail

## Property features

**Swimming pool | Resident only Spa | Swimming pool, sauna, steam room | Modern and luxury design and finish | Secured living area with 24 hours concierge | EPC-B | Private health club | Brand new apartment | Can be furnished or unfurnished | Nearby High Street Kensington**

For more information about this property,  
please call our Kensington branch on

**020 7938 3522**

Redress & Client Money Protection :

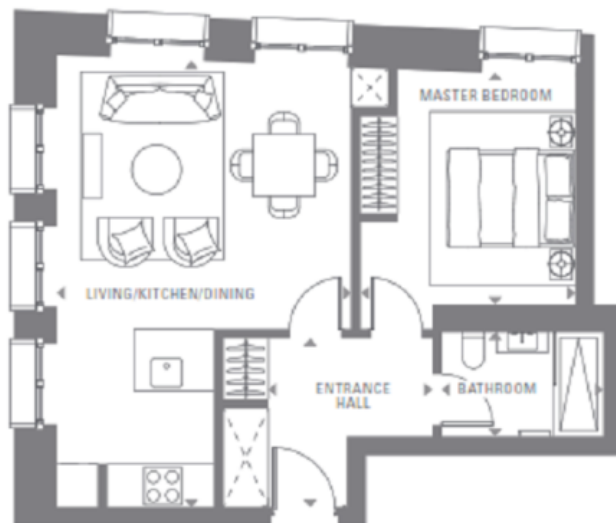
Benham and Reeves are members of The Property Ombudsman redress scheme and have Client Money protection with ARLA Propertymark. You can find more information on our website at <https://www.benhams.com/membership/>

Benham & Reeves

# Lancer Square, Kensington, W8

£995 per week, £4,312 per month + fees

[www.benhams.com](http://www.benhams.com)



Score	Energy rating	Current	Potential
92+	A		
81-91	B	81   B	81   B
69-80	C		
55-68	D		
39-54	E		
21-38	F		
1-20	G		

## London branches open six days a week Mon - Sat

Canary Wharf | City | Colindale | Dartmouth Park | Ealing | Fulham  
Hammersmith | Hampstead | Highgate | Hyde Park | Kensington | Kew  
Knightsbridge | Nine Elms | Shoreditch | Southall | Surrey Quays  
Wapping | Wembley | White City | Woolwich

## International offices

China | Hong Kong SAR | India | Indonesia | Qatar | Malaysia | Middle East | Pakistan  
Singapore | South Africa | Thailand | Turkey

