



Benham&Reeves

**Young Street, Kensington, W8**

£1,650 per week, £7,150 per month + fees

 2 Bedrooms    2 Bathrooms     
Furnished/UnFurnished

A newly refurbished contemporary 2nd floor apartment situated within a modern purpose-built block in the heart of fashionable Kensington. Ideally located close to Kensington High Street. The building offers a porter facility and lift access.

Please [click here](#) for full detail

## Property features

**Two Bedrooms | Two Bathrooms | Reception | Furn/Unfurn | Fitted Kitchen | EPC-C | 1055 Sq Ft | Wood Floors | Modern Decor | Nearby High Street Kensington Tube Station**

For more information about this property,  
please call our Kensington branch on

**020 7938 3522**

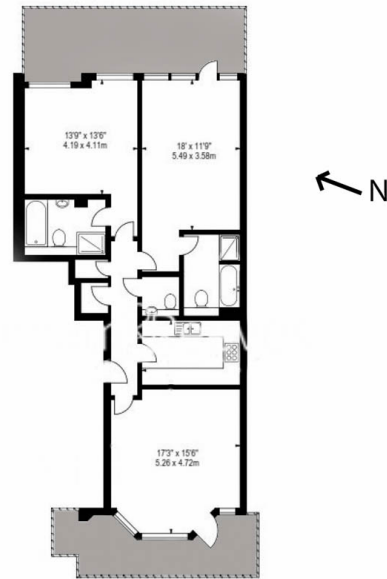




# Young Street, Kensington, W8

£1,650 per week, £7,150 per month + fees

[www.benhams.com](http://www.benhams.com)



00373-5IH.W8 - 2nd floor  
Approx Gross Area: 99 sq m / 1055 sq ft

Score	Energy rating	Current	Potential
92+	A		
81-91	B		
69-80	C	72   c	79   c
55-68	D		
39-54	E		
21-38	F		
1-20	G		

## London branches open six days a week Mon - Sat

Canary Wharf | City | Colindale | Dartmouth Park | Ealing | Fulham  
Hammersmith | Hampstead | Highgate | Hyde Park | Kensington | Kew  
Knightsbridge | Nine Elms | Shoreditch | Southall | Surrey Quays  
Wapping | Wembley | White City | Woolwich

## International offices

China | Hong Kong SAR | India | Indonesia | Qatar | Malaysia | Middle East | Pakistan  
Singapore | South Africa | Thailand | Turkey

