



Benham & Reeves

**Lancer Square, Kensington, W8**

£1,950 per week, £8,450 per month + fees

 1 Bedroom     1 Bathroom     Furnished

A substantial, elegant apartment in a stunning development, with exclusive health club, situated in a desirable conservation area amongst palaces. Kensington High Street Station is a 0.1 mile walk away.

Please [click here](#) for full detail

## Property features

**One bedroom | One bathroom | Large open plan kitchen | Living area | Fully furnished | EPC-B | Private health club for residents | Large Swimming pool | Gym and a 24 hour concierge | Nearby Edgware Road Underground Station**

For more information about this property,  
please call our Kensington branch on

**020 7938 3522**

Redress & Client Money Protection :

Benham and Reeves are members of The Property Ombudsman redress scheme and have Client Money protection with ARLA Propertymark. You can find more information on our website at <https://www.benhamandreeves.com/membership/>



Benham & Reeves

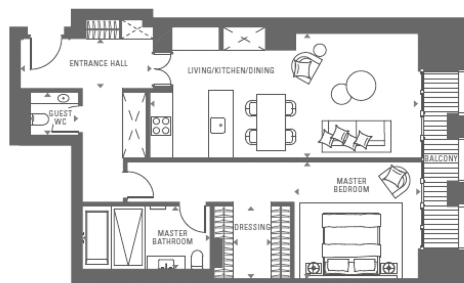


# Lancer Square, Kensington, W8

£1,950 per week, £8,450 per month + fees

www.benhams.com

1st Floor  
Approx gross internal area: 992sq/ft - 92sq/m



ENTRANCE HALL	4.2M x 1.6M	13'9" x 5'3"
LIVING/KITCHEN/DINING	8.5M x 3.9M	27'11" x 12'9"
MASTER BEDROOM	3.9M x 3.7M	12'10" x 12'2"
MASTER BATHROOM	4.0M x 2.0M	13'1" x 6'7"
DRESSING	1.2M x 2.3M	3'11" x 7'7"
GUEST WC	1.5M x 1.3M	4'11" x 4'3"



Whilst every attempt has been made to ensure the accuracy of the floor plan contained here, measurements of doors, windows, rooms and any other items are approximate and no responsibility is taken for any error, omission, or mis-statement. This plan is for illustrative purposes only and should be used as such by any prospective purchaser. The services, systems and appliances shown have not been tested and no guarantee as to their operability or efficiency can be given.  
Made with Metropix G2018

Score	Energy rating	Current	Potential
92+	A		
81-91	B	85   B	85   B
69-80	C		
55-68	D		
39-54	E		
21-38	F		
1-20	G		

## London branches open six days a week Mon - Sat

Canary Wharf | City | Colindale | Dartmouth Park | Ealing | Fulham  
Hammersmith | Hampstead | Highgate | Hyde Park | Kensington | Kew  
Knightsbridge | Nine Elms | Shoreditch | Southall | Surrey Quays  
Wapping | Wembley | White City | Woolwich

## International offices

China | Hong Kong SAR | India | Indonesia | Qatar | Malaysia | Middle East | Pakistan  
Singapore | South Africa | Thailand | Turkey



Benham & Reeves