



Benham & Reeves

Lancer Square, Kensington, W8

£3,950 per week, £17,117 per month + fees

 2 Bedrooms  2 Bathrooms  Furnished

A substantial, elegant apartment in a stunning development, with car parking space and exclusive health club, situated in a desirable conservation area amongst palaces. Kensington High Street Station is a 0.1 mile walk away.

Please [click here](#) for full detail

Property features

Two double bedroom | Two bathroom | Fully furnished | Cloakroom | Car parking space | EPC-B | 24 hour concierge | Swimming pool and gym | Nearby Kensington and moments from Hyde Park | Nearby Edgware Road Underground Station

For more information about this property,
please call our Kensington branch on

020 7938 3522

Redress & Client Money Protection :

Benham and Reeves are members of The Property Ombudsman redress scheme and have Client Money protection with ARLA Propertymark. You can find more information on our website at <https://www.benhamandreeves.com/membership/>



Benham & Reeves

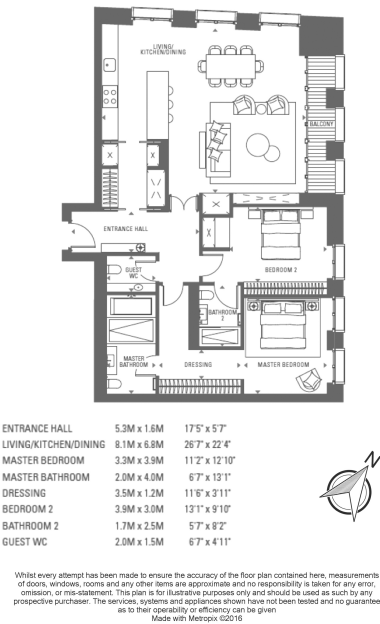


Lancer Square, Kensington, W8

£3,950 per week, £17,117 per month + fees

www.benhams.com

1st Floor
Approx gross internal area: 1777sq/ft - 137sq/m



Score	Energy rating	Current	Potential
92+	A		
81-91	B	85 B	85 B
69-80	C		
55-68	D		
39-54	E		
21-38	F		
1-20	G		

London branches open six days a week Mon - Sat

Canary Wharf | City | Colindale | Dartmouth Park | Ealing | Fulham
Hammersmith | Hampstead | Highgate | Hyde Park | Kensington | Kew
Knightsbridge | Nine Elms | Shoreditch | Southall | Surrey Quays
Wapping | Wembley | White City | Woolwich



International offices

China | Hong Kong SAR | India | Indonesia | Qatar | Malaysia | Middle East | Pakistan
Singapore | South Africa | Thailand | Turkey