



Benham & Reeves

Verdo, Kew Bridge, TW8

£578 per week, £2,505 per month + fees

🛏️ 2 Bedrooms 🚿 2 Bathrooms 🛏️
Furnished/UnFurnished

Spacious apartment set in a desirable development with excellent resident facilities, including work from home pods, within walking distance from the amenities of Kew Village and Chiswick High Road.

Please [click here](#) for full detail

Property features

Wood Flooring | Resident's Lounge | Cinema | Private Balcony | Riverside Location | EPC-B | 24 Hrs Concierge | Resident's Gym | Storage Space | Kew Bridge Station

For more information about this property,
please call our Kew branch on

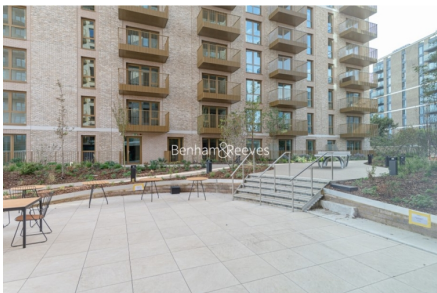
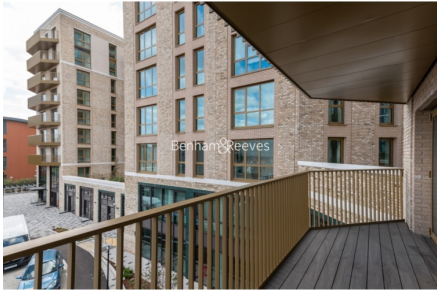
020 8326 1960

Redress & Client Money Protection :

Benham and Reeves are members of The Property Ombudsman redress scheme and have Client Money protection with ARLA Propertymark. You can find more information on our website at <https://www.benhams.com/membership/>



Benham & Reeves



Verdo, Kew Bridge, TW8

£578 per week, £2,505 per month + fees

www.benhams.com

Score	Energy rating	Current	Potential
92+	A		
81-91	B	86 B	86 B
69-80	C		
55-68	D		
39-54	E		
21-38	F		
1-20	G		

London branches open six days a week Mon - Sat

Canary Wharf | City | Colindale | Dartmouth Park | Ealing | Fulham
Hammersmith | Hampstead | Highgate | Hyde Park | Kensington | Kew
Knightsbridge | Nine Elms | Shoreditch | Southall | Surrey Quays
Wapping | Wembley | White City | Woolwich

International offices

China | Hong Kong SAR | India | Indonesia | Qatar | Malaysia | Middle East | Pakistan
Singapore | South Africa | Thailand | Turkey

