



Benham & Reeves

## **Crisp Road, Hammersmith, W6**

£658 per week, £2,851 per month + fees

🛏 1 Bedroom    🚿 1 Bathroom    🛋 Furnished

Very bright apartment, with direct views onto historic Grade II Hammersmith Bridge situated in a popular riverside development on the banks of one of London's unspoilt riverscapes in Hammersmith. A convenient two-minute walk from Hammersmith Underground station (Piccadilly and District Lines).

Please [click here](#) for full detail

## Property features

**One Bedroom Apartment with Built-in Wardrobe | Quality Furnished / LED Spotlights / Sizeable Private Balc | Central Garden View / Utility Room / Long Hallway | 24 Hr Concierge / 24 Hr Security / Communal Gardens / Bars | Fully Fitted Kitchen Integrated with Well-Known Appliances | EPC-B | World-famous Riverside Studios | Podium Landscaped Gardens | Minutes from Hammersmith Station**

For more information about this property,  
please call our Hammersmith branch on

**020 8600 0960**

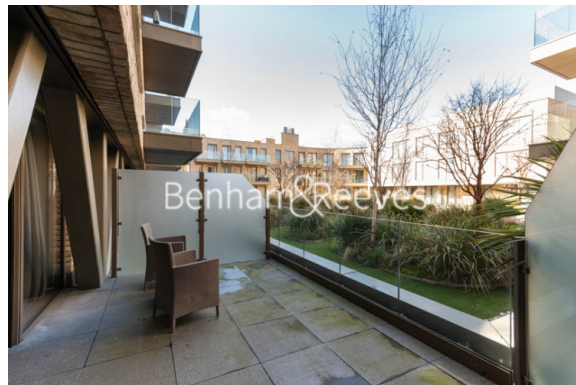
Redress & Client Money Protection :

Benham and Reeves are members of The Property Ombudsman redress scheme and have Client Money protection with ARLA Propertymark. You can find more information on our website at <https://www.benhams.com/membership/>



Benham&Reeves



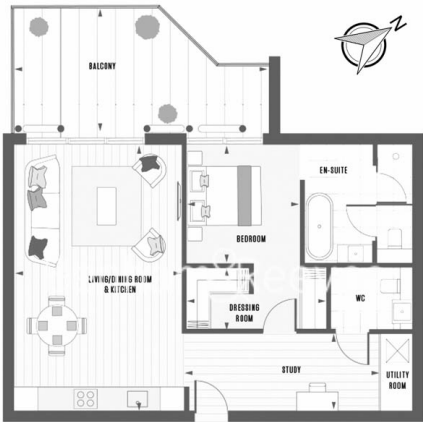


# Crisp Road, Hammersmith, W6

£658 per week, £2,851 per month + fees

www.benhams.com

4th Floor  
Approx gross internal area: 735sq/ft - 68.3q/m



Living / Dining Room & Kitchen	22' 5" x 13' 11"	6835mm x 4247mm
Bedroom	10' 4" x 9' 7"	3158mm x 2923mm
Dressing Room	11' 9" x 5' 1"	3573mm x 1550mm
Study	16' 4" x 6' 4"	4989mm x 1928mm
Balcony	20' 10" x 10' 4"	6350mm x 3162mm

Whilst every attempt has been made to ensure the accuracy of the floor plan contained here, measurements of doors, windows, rooms and any other items are approximate and no responsibility is taken for any error, omission, or mis-statement. This plan is for illustrative purposes only and should be used as such by any prospective purchaser. The services, systems and appliances shown have not been tested and no guarantee as to their operability or efficiency can be given.  
Made with Metropix i2016

Score	Energy rating	Current	Potential
92+	A		
81-91	B	83   B	83   B
69-80	C		
55-68	D		
39-54	E		
21-38	F		
1-20	G		

## London branches open six days a week Mon - Sat

Canary Wharf | City | Colindale | Dartmouth Park | Ealing | Fulham  
Hammersmith | Hampstead | Highgate | Hyde Park | Kensington | Kew  
Knightsbridge | Nine Elms | Shoreditch | Southall | Surrey Quays  
Wapping | Wembley | White City | Woolwich



## International offices

China | Hong Kong SAR | India | Israel | Malaysia | Middle East | Pakistan  
Qatar | Singapore | South Africa | Thailand | Turkey