



Benham&Reeves

**Greenleaf Walk, Southall, UB1**

£347 per week, £1,504 per month + fees

 1 Bedroom    1 Bathroom    Furnished

Stunning 1st floor suite style apartment situated in one of the most biodiverse and exciting developments in West London, close to fast transport connections. Southall Station (Elizabeth Line) is within walking distance.

Please [click here](#) for full detail

## Property features

**Suite style apartment | Concierge | Gym | Cinema room | Residents lounge | EPC-B | Balcony | Wood floors | Open Plan Design | Southall Station (Elizabeth Line)**

For more information about this property,  
please call our Southall branch on

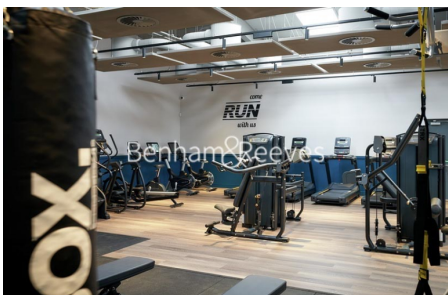
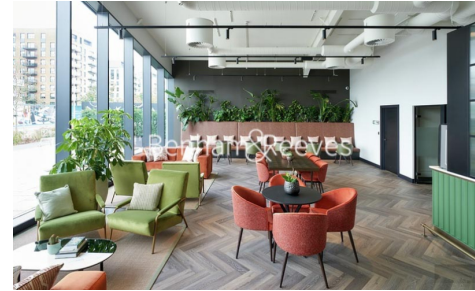
**020 8051 0800**

Redress & Client Money Protection :

Benham and Reeves are members of The Property Ombudsman redress scheme and have Client Money protection with ARLA Propertymark. You can find more information on our website at <https://www.benhamandreeves.com/membership/>



Benham&Reeves

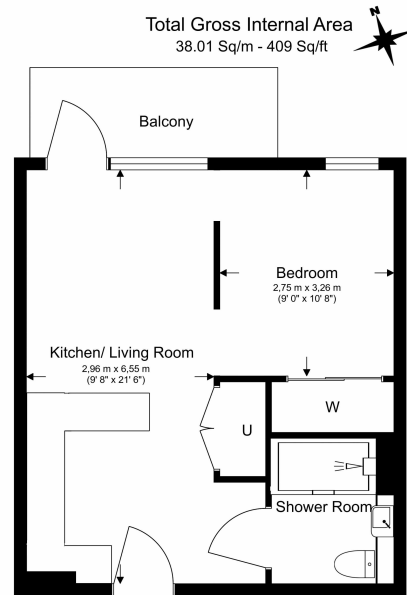




# Greenleaf Walk, Southall, UB1

£347 per week, £1,504 per month + fees

www.benhams.com



Floor Plan measurements are approximate and are for illustrative purposes only. While we do not doubt the floor plans accuracy, we make no guarantee, warranty or representation as to the accuracy and completeness of the floor plan.

Score	Energy rating	Current	Potential
92+	A		
81-91	B	84   B	84   B
69-80	C		
55-68	D		
39-54	E		
21-38	F		
1-20	G		

## London branches open six days a week Mon - Sat

Canary Wharf | City | Colindale | Dartmouth Park | Ealing | Fulham  
Hammersmith | Hampstead | Highgate | Hyde Park | Kensington | Kew  
Knightsbridge | Nine Elms | Shoreditch | Southall | Surrey Quays  
Wapping | Wembley | White City | Woolwich

## International offices

China | Hong Kong SAR | India | Israel | Malaysia | Middle East | Pakistan  
Qatar | Singapore | South Africa | Thailand | Turkey



Benham & Reeves