



Benham & Reeves

Emerald Gardens, Kew, TW9

£715 per week, £3,100 per month + fees

 2 Bedrooms  2 Bathrooms  Furnished

Modern apartment, with underground parking, set in idyllic surroundings and located on the Bank of the Thames. Kew Gardens station is a 10 minute walk from the development.

Please [click here](#) for full detail

Property features

Underground Parking | Double Storage | Private Balcony | 24hrs Concierge | On Site Amenities | EPC-B | Close To Kew Retail Park | Communal Gardens | Bicycle Storage | Nearby Kew Bridge Station

For more information about this property,
please call our Kew branch on

020 8326 1960

Redress & Client Money Protection :

Benham and Reeves are members of The Property Ombudsman redress scheme and have Client Money protection with ARLA Propertymark. You can find more information on our website at <https://www.benhams.com/membership/>



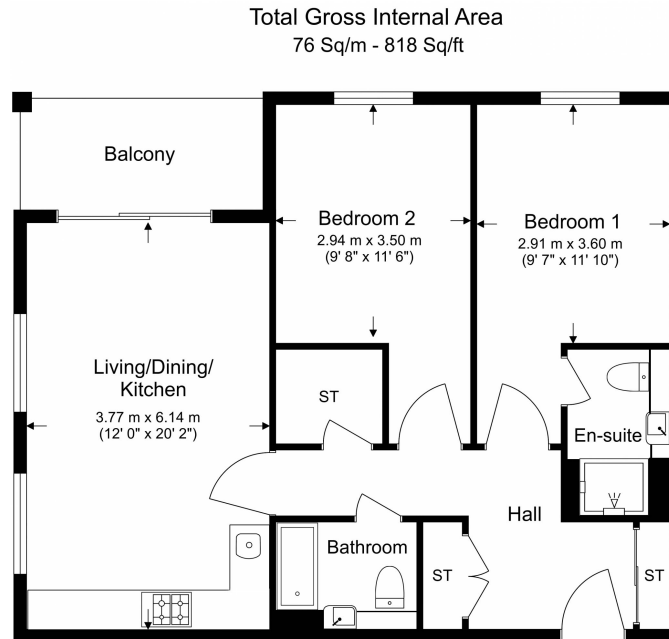
Benham & Reeves



Emerald Gardens, Kew, TW9

£715 per week, £3,100 per month + fees

www.benhams.com



Benham & Reeves

Floor Plan measurements are approximate and are for illustrative purposes only. While we do not doubt the floor plans accuracy, we make no guarantee, warranty or representation as to the accuracy and completeness of the floor plan.

Energy Efficiency Rating		
	Current	Potential
Very energy efficient - lower running costs		
(92+) A		
(81-91) B	89	89
(69-80) C		
(55-68) D		
(39-54) E		
(21-38) F		
(1-20) G		
Not energy efficient - higher running costs		
England, Scotland & Wales	EU Directive 2002/91/EC	

London branches open six days a week Mon - Sat

Canary Wharf | City | Colindale | Dartmouth Park | Ealing | Fulham
Hammersmith | Hampstead | Highgate | Hyde Park | Kensington | Kew
Knightsbridge | Nine Elms | Shoreditch | Southall | Surrey Quays
Wapping | Wembley | White City | Woolwich

International offices

China | Hong Kong SAR | India | Indonesia | Qatar | Malaysia | Middle East |
Singapore | South Africa | Thailand | Turkey



Benham & Reeves