



Benham & Reeves

## Levett Square, Emerald Gardens, Kew, TW9

£635 per week, £2,750 per month + fees

 2 Bedrooms    2 Bathrooms    Furnished

Stylish apartment, with underground parking, situated in a popular development in Kew conveniently positioned nearby the amenities of Kew Retail Park and the Kew Royal Botanical Gardens. Located a brief walk from Kew Gardens Station.

Please [click here](#) for full detail

## Property features

**Underground Parking | 24hrs Concierge | Private Balcony | Wine Cooler | On Site Amenities | EPC-B | Communal Gardens | Bicycle Storage | Close To Kew Retail Park | Nearby Kew Gardens Station**

For more information about this property,  
please call our Kew branch on

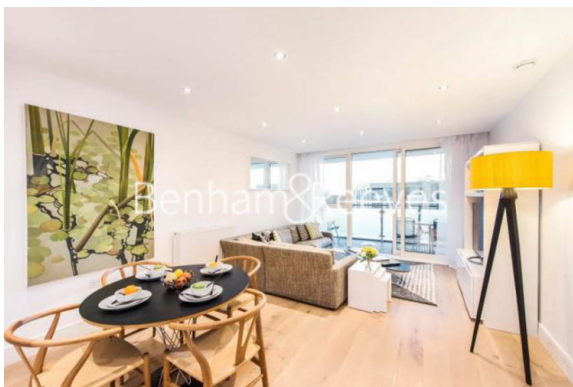
**020 8326 1960**

Redress & Client Money Protection :

Benham and Reeves are members of The Property Ombudsman redress scheme and have Client Money protection with ARLA Propertymark. You can find more information on our website at <https://www.benhams.com/membership/>



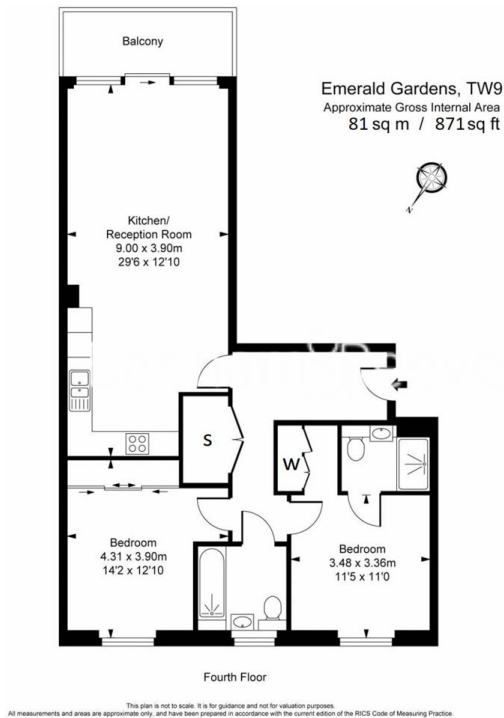
Benham&Reeves



# Levett Square, Emerald Gardens, Kew, TW9

£635 per week, £2,750 per month + fees

www.benhams.com



Score	Energy rating	Current	Potential
92+	A		
81-91	B	88   B	88   B
69-80	C		
55-68	D		
39-54	E		
21-38	F		
1-20	G		

## London branches open six days a week Mon - Sat

Canary Wharf | City | Colindale | Dartmouth Park | Ealing | Fulham  
Hammersmith | Hampstead | Highgate | Hyde Park | Kensington | Kew  
Knightsbridge | Nine Elms | Shoreditch | Southall | Surrey Quays  
Wapping | Wembley | White City | Woolwich

## International offices

China | Hong Kong SAR | India | Israel | Malaysia | Middle East | Pakistan  
Qatar | Singapore | South Africa | Thailand | Turkey



Benham & Reeves