



Benham & Reeves

Emerald Gardens, Kew, TW9

£715 per week, £3,100 per month + fees

 2 Bedrooms  2 Bathrooms  Furnished

Stylish, bright apartment, with UNDERGROUND PARKING, situated within a popular development conveniently positioned nearby the amenities of Kew Retail Park and Kew Gardens Station.

Please [click here](#) for full detail

Property features

Underground Parking | 24hrs Concierge | Private Balcony | Wine Cooler | On Site Amenities | EPC- B | Communal Gardens | Bicycle Storage | Neutrally Decorated Throughout | Close To Kew Retail Park

For more information about this property,
please call our Kew branch on

020 8326 1960

Redress & Client Money Protection :

Benham and Reeves are members of The Property Ombudsman redress scheme and have Client Money protection with ARLA Propertymark. You can find more information on our website at <https://www.benhams.com/membership/>



Benham & Reeves

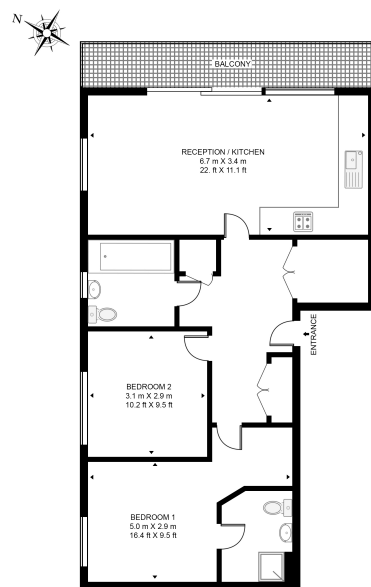


Emerald Gardens, Kew, TW9

£715 per week, £3,100 per month + fees

www.benhams.com

CHANCERY HOUSE, LEVETT SQUARE
APPROXIMATE GROSS INTERNAL FLOOR AREA 736 SQ.FT (68.4 SQ.M)



GROUND FLOOR

This floor plan has been defined by the RICS Code of Measurement. This floor plan and all others are for approximate representative purposes only and upon usage is agreed to as such by the client.
WWW: indvtsart.com | TEL: 0203 374 1967 | EMAIL: info@indvtsart.com

Score	Energy rating	Current	Potential
92+	A		
81-91	B	85 B	85 B
69-80	C		
55-68	D		
39-54	E		
21-38	F		
1-20	G		

London branches open six days a week Mon - Sat

Canary Wharf | City | Colindale | Dartmouth Park | Ealing | Fulham
Hammersmith | Hampstead | Highgate | Hyde Park | Kensington | Kew
Knightsbridge | Nine Elms | Shoreditch | Southall | Surrey Quays
Wapping | Wembley | White City | Woolwich

International offices

China | Hong Kong SAR | India | Indonesia | Qatar | Malaysia | Middle East |
Singapore | South Africa | Thailand | Turkey



Benham & Reeves