



Benham & Reeves

**Moorehead Way, Kidbrooke Village, SE3**

£554 per week, £2,401 per month + fees

 2 Bedrooms    2 Bathrooms    Furnished

BRAND NEW bright and spacious 4th floor apartment surrounded by over 86 acres of open parkland located in a popular London Royal Borough Kidbrooke station is on-site (Zone 3).

Please [click here](#) for full detail

## Property features

**Spacious 2 bed 2 bath furnished flat | Private large balcony overlooking park | Ample storage with large wardrobe | Open plan kitchen with fitted well known kitchen appliances | Close to green spaces, landscapes and meadows | EPC- B | Onsite Gymnasium | Onsite Sainsbury and The Depot pub | 24 hours concierge with CCTV security | Nearby Kidbrooke station**

For more information about this property,  
please call our Woolwich branch on

**020 8051 0700**

Redress & Client Money Protection :

Benham and Reeves are members of The Property Ombudsman redress scheme and have Client Money protection with ARLA Propertymark. You can find more information on our website at <https://www.benhams.com/membership/>



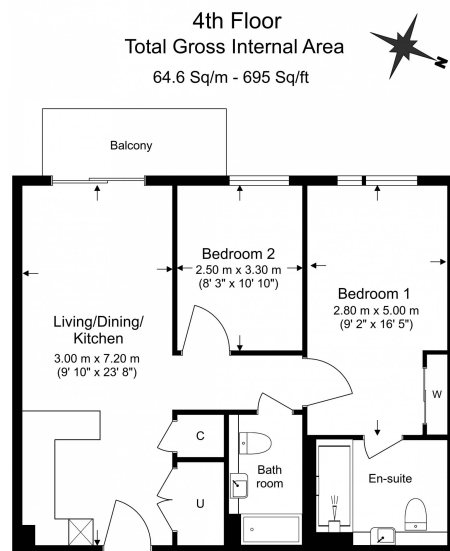
Benham & Reeves



# Moorehead Way, Kidbrooke Village, SE3

£554 per week, £2,401 per month + fees

www.benhams.com



Benham & Reeves

Floor Plan measurements are approximate and are for illustrative purposes only. While we do not doubt the floor plans accuracy, we make no guarantee, warranty or representation as to the accuracy and completeness of the floor plan.

Score	Energy rating	Current	Potential
92+	A		
81-91	B	85 B	85 B
69-80	C		
55-68	D		
39-54	E		
21-38	F		
1-20	G		

## London branches open six days a week Mon - Sat

Canary Wharf | City | Colindale | Dartmouth Park | Ealing | Fulham  
Hammersmith | Hampstead | Highgate | Hyde Park | Kensington | Kew  
Knightsbridge | Nine Elms | Shoreditch | Southall | Surrey Quays  
Wapping | Wembley | White City | Woolwich

## International offices

China | Hong Kong SAR | India | Indonesia | Qatar | Malaysia | Middle East |  
Singapore | South Africa | Thailand | Turkey



Benham & Reeves