



Benham & Reeves

Maltby House, Kidbrooke Village, SE3

£300 per week, £1,300 per month + fees

 Studio  1 Bathroom  Furnished

A large 6th floor Manhattan studio apartment with stunning views situated in a desirable development with excellent transport into Canary Wharf, London Bridge and Victoria.

Please [click here](#) for full detail

Property features

1 Bedroom | 1 Bathroom | Open Planned Living | Furnished | Fitted Kitchen | EPC-B | Balcony | 24 Hour Concierge | Close to Amenities | Nearby Kidbrooke Tube Station

For more information about this property,
please call our Woolwich branch on

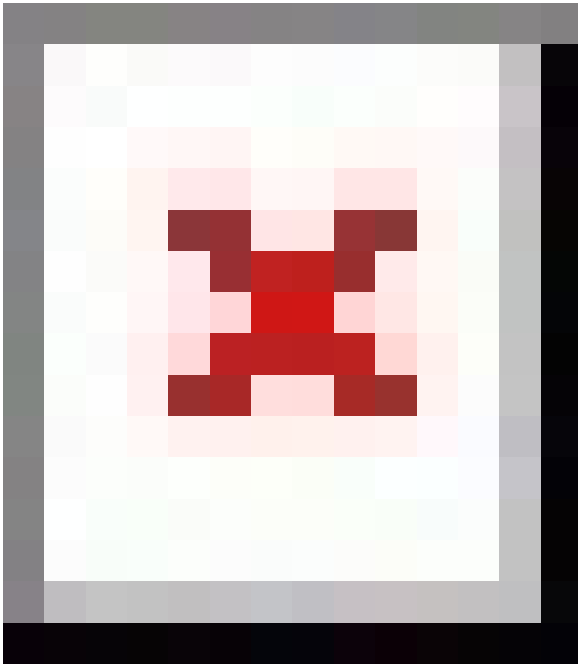
020 8051 0700



Redress & Client Money Protection :

Benham and Reeves are members of The Property Ombudsman redress scheme and have Client Money protection with ARLA Propertymark. You can find more information on our website at <https://www.benhams.com/membership/>

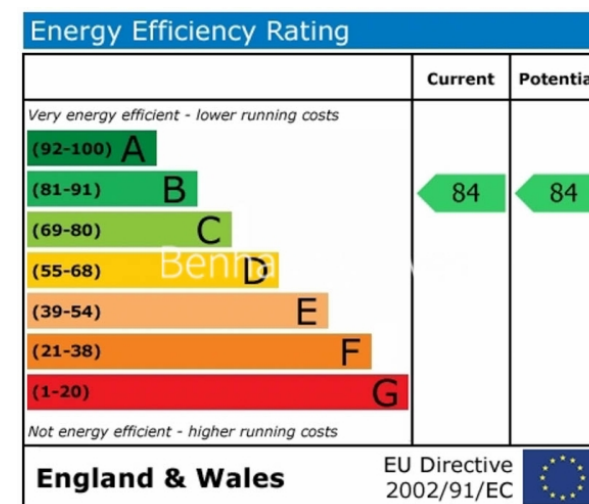
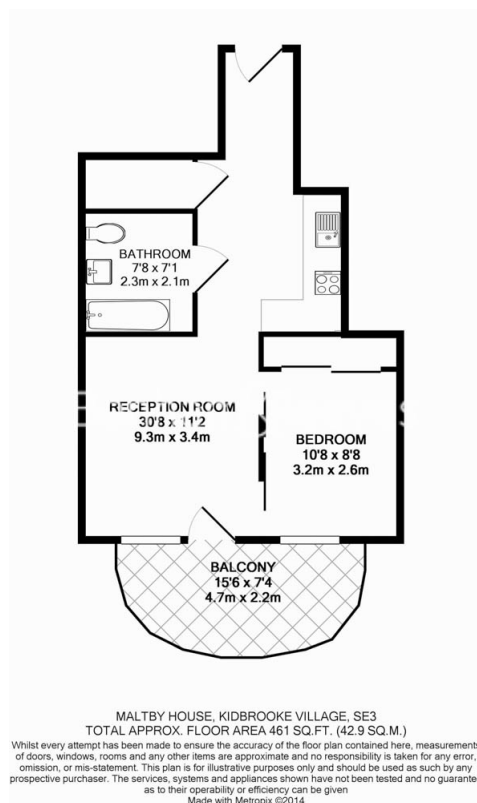
Benham & Reeves



Maltby House, Kidbrooke Village, SE3

£300 per week, £1,300 per month + fees

www.benhams.com



London branches open six days a week Mon - Sat

Canary Wharf | City | Colindale | Dartmouth Park | Ealing | Fulham
Hammersmith | Hampstead | Highgate | Hyde Park | Kensington | Kew
Knightsbridge | Nine Elms | Shoreditch | Southall | Surrey Quays
Wapping | Wembley | White City | Woolwich

International offices

China | Hong Kong SAR | India | Indonesia | Qatar | Malaysia | Middle East | Pakistan
Singapore | South Africa | Thailand | Turkey



Benham & Reeves