



Benham & Reeves

Lucas House, Kings Chelsea, SW10

£785 per week, £3,402 per month + fees

 2 Bedrooms  2 Bathrooms  Unfurnished

An exquisite ground floor apartment situated in a highly sought-after development boasting Tennis Courts, Health Club and Swimming pool for residents. Close to the King's Road and with Fulham Broadway Underground Station (District and Circle Lines). Secure Car Parking Space included.

Please [click here](#) for full detail

Property features

2 Bedrooms | 2 Bathrooms | Reception | Furnished | Fully-Fitted Alcove Kitchen | EPC-D | 731 sq ft | Secure Underground Car Parking Space | 24 Hr Concierge, Swimming Pool, Tennis Courts | Nearby Fulham Broadway Underground Station

For more information about this property,
please call our Fulham branch on

020 7348 7620

Redress & Client Money Protection :

Benham and Reeves are members of The Property Ombudsman redress scheme and have Client Money protection with ARLA Propertymark. You can find more information on our website at <https://www.benhams.com/membership/>



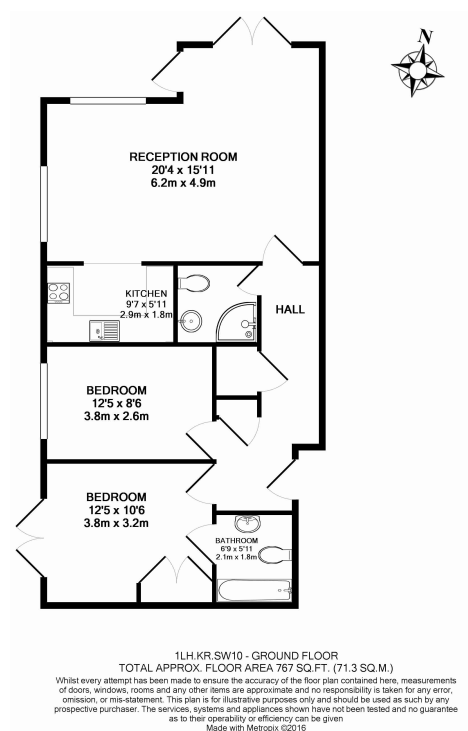
Benham&Reeves



Lucas House, Kings Chelsea, SW10

£785 per week, £3,402 per month + fees

www.benhams.com



Score	Energy rating	Current	Potential
92+	A		
81-91	B		
69-80	C		
55-68	D	66 D	67 D
39-54	E		
21-38	F		
1-20	G		

London branches open six days a week Mon - Sat

Canary Wharf | City | Colindale | Dartmouth Park | Ealing | Fulham
Hammersmith | Hampstead | Highgate | Hyde Park | Kensington | Kew
Knightsbridge | Nine Elms | Shoreditch | Southall | Surrey Quays
Wapping | Wembley | White City | Woolwich

International offices

China | Hong Kong SAR | India | Indonesia | Qatar | Malaysia | Middle East |
Singapore | South Africa | Thailand | Turkey



Benham & Reeves