



Benham & Reeves

Plimsoll Building, Kings Cross, N1C

£475 per week, £2,058 per month + fees

 1 Bedroom  1 Bathroom  Furnished

Well-presented 1 bedroom apartment set within the Plimsoll building, a newly built development located within the hugely popular Kings Cross development.

Please [click here](#) for full detail

Property features

1 Bedroom | 1 Bathroom | Reception | Furnished | Fitted Kitchen | EPC-B | Wood Floors, Floor To Ceiling Windows & Underfloor Heating | Residents Gym, Dining Facilities, Rooftop Garden & Concierge | Nearby Kings Cross St Pancras Station

For more information about this property,
please call our Hyde Park branch on

020 7402 9866



Redress & Client Money Protection :

Benham and Reeves are members of The Property Ombudsman redress scheme and have Client Money protection with ARLA Propertymark. You can find more information on our website at <https://www.benhams.com/membership/>

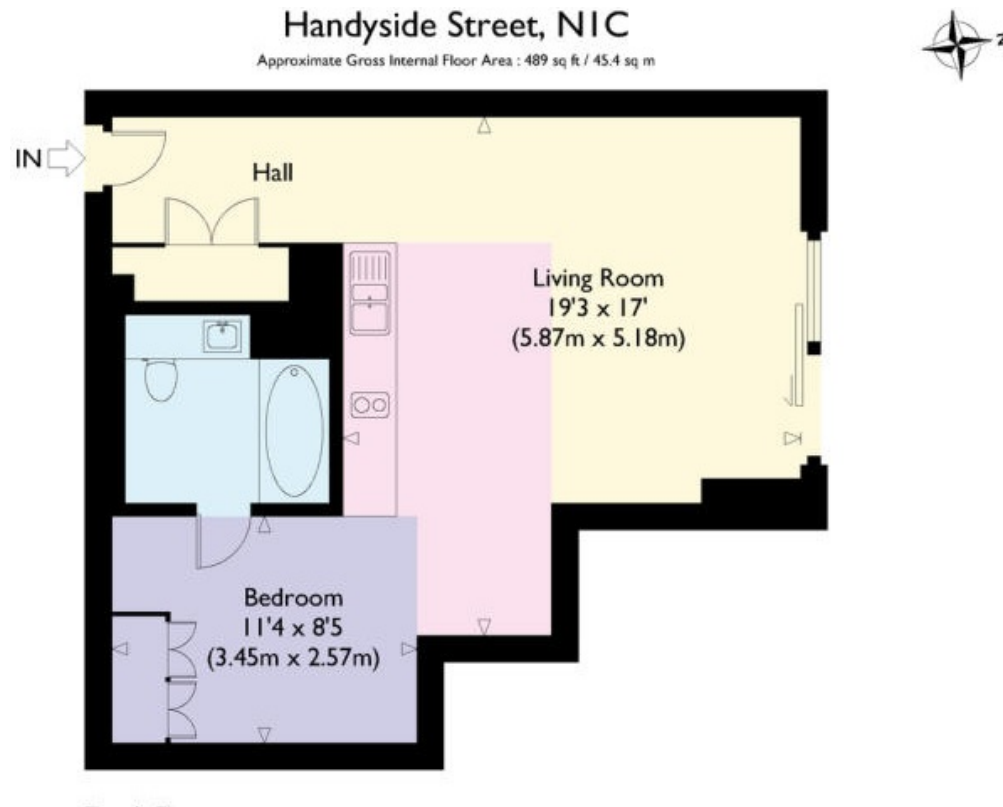
Benham & Reeves



Plimsoll Building, Kings Cross, N1C

£475 per week, £2,058 per month + fees

www.benhams.com



London branches open six days a week Mon - Sat

Canary Wharf | City | Colindale | Dartmouth Park | Ealing | Fulham
Hammersmith | Hampstead | Highgate | Hyde Park | Kensington | Kew
Knightsbridge | Nine Elms | Shoreditch | Southall | Surrey Quays
Wapping | Wembley | White City | Woolwich

International offices

China | Hong Kong SAR | India | Indonesia | Qatar | Malaysia | Middle East | Pakistan
Singapore | South Africa | Thailand | Turkey



Benham & Reeves