



Benham & Reeves

Royal Exchange, Kingston, KT1

£415 per week, £1,800 per month + fees

 Studio  1 Bathroom  Furnished

Furnished 3rd floor studio apartment , with WOOD FLOORING, moments from Kingston National Rail Station. EPC-B

Please [click here](#) for full detail

Property features

Concierge | Residents Gym | Co-Working Spaces | Cinema Room | Furnished | EPC-B | Studio Apartment | Open Plan Living | Kingston National Rail Station

For more information about this property,
please call our Kew branch on

020 8326 1960

Redress & Client Money Protection :

Benham and Reeves are members of The Property Ombudsman redress scheme and have Client Money protection with ARLA Propertymark. You can find more information on our website at <https://www.benham.com/membership/>



Benham & Reeves

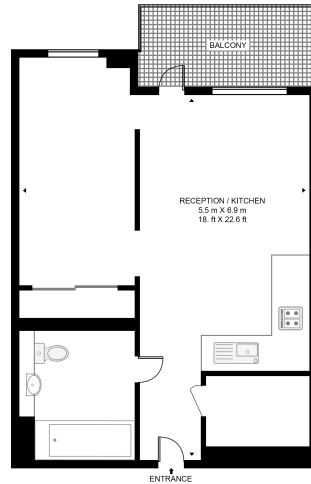


Royal Exchange, Kingston, KT1

£415 per week, £1,800 per month + fees

www.benhams.com

YORKE HOUSE, 5 WHEATFIELD WAY
APPROXIMATE GROSS INTERNAL FLOOR AREA 428 SQ.FT (39.8 SQ.M)



THIRD FLOOR

This floor plan has been defined by the RICS Code of Measurement. This floor plan and all others are for approximate representative purposes only and upon usage is agreed to as such by the client.
WWW.HOVISALET.COM | TEL: 0203 974 1987 | EMAIL: info@hovisaleat.com

Score	Energy rating	Current	Potential
92+	A		
81-91	B	83 B	83 B
69-80	C		
55-68	D		
39-54	E		
21-38	F		
1-20	G		

London branches open six days a week Mon - Sat

Canary Wharf | City | Colindale | Dartmouth Park | Ealing | Fulham
Hammersmith | Hampstead | Highgate | Hyde Park | Kensington | Kew
Knightsbridge | Nine Elms | Shoreditch | Southall | Surrey Quays
Wapping | Wembley | White City | Woolwich

International offices

China | Hong Kong SAR | India | Indonesia | Qatar | Malaysia | Middle East |
Singapore | South Africa | Thailand | Turkey

