



Benham & Reeves

Admiralty Building, Kingston Upon Thames, KT2

£992 per week, £4,300 per month + fees

 3 Bedrooms  2 Bathrooms  Furnished

Bright apartment, with direct views of the River Thames and underground parking, situated in a popular and modern development close to the amenities of Kingston and Kingston Station.

Please [click here](#) for full detail

Property features

Wood Floors | Private Terrace | Concierge | Built In Storage | Local Amenities | EPC-D | Communal Roof Terrace | Wine Cooler | River Views | Kingston Station

For more information about this property,
please call our Kew branch on

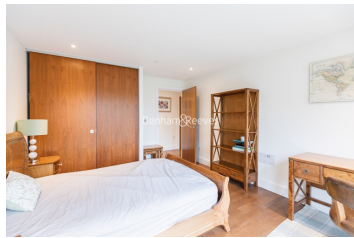
020 8326 1960

Redress & Client Money Protection :

Benham and Reeves are members of The Property Ombudsman redress scheme and have Client Money protection with ARLA Propertymark. You can find more information on our website at <https://www.benhamandreeves.com/membership/>



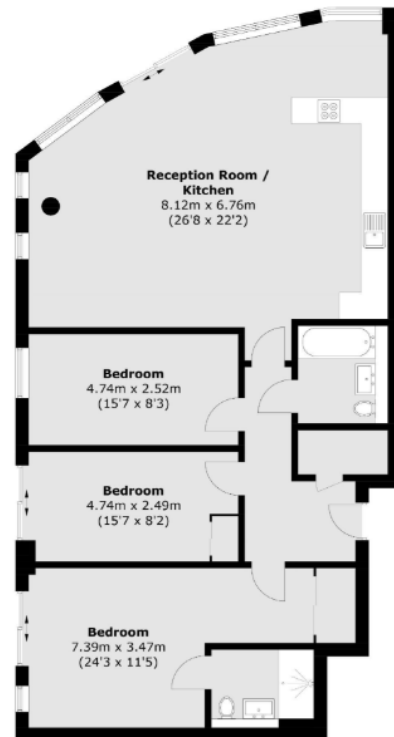
Benham&Reeves



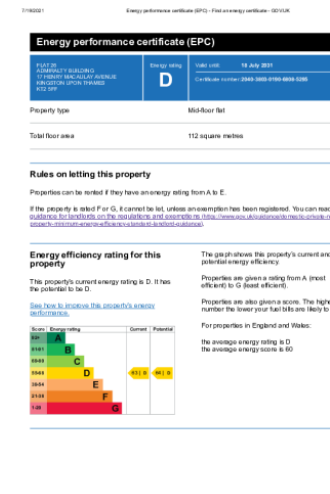
Admiralty Building, Kingston Upon Thames, KT2

www.benhams.com

£992 per week, £4,300 per month + fees



Total area (approx.): 117.1 sq. m (1260.5 sq. ft)



London branches open six days a week Mon - Sat

Canary Wharf | City | Colindale | Dartmouth Park | Ealing | Fulham
Hammersmith | Hampstead | Highgate | Hyde Park | Kensington | Kew
Knightsbridge | Nine Elms | Shoreditch | Southall | Surrey Quays
Wapping | Wembley | White City | Woolwich

International offices

China | Hong Kong SAR | India | Indonesia | Qatar | Malaysia | Middle East | Pakistan
Singapore | South Africa | Thailand | Turkey



Benham & Reeves