



Benham & Reeves

Tinniswood Close, Drayton Park, N5

£318 per week, £1,378 per month + fees

🛏️ 1 Bedroom 🚿 1 Bathroom 🛋️ Part-furnished

A ground floor purpose-built apartment with gated off-street parking located within easy reach of Holloway Road (Piccadilly) and Drayton Park (overground) stations.

Please [click here](#) for full detail

Property features

One Bedroom | One Bathroom | Reception Room | Gated Off-Street Parking | Part Furnished | EPC-C | Close to amenities of Holloway Road | Moments from the open parkland of Highbury | Excellent Transport Links | Drayton Park Train Station (Zone 2)

For more information about this property,
please call our Dartmouth Park branch on

020 7319 9660

Redress & Client Money Protection :

Benham and Reeves are members of The Property Ombudsman redress scheme and have Client Money protection with ARLA Propertymark. You can find more information on our website at <https://www.benhamandreeves.com/membership/>



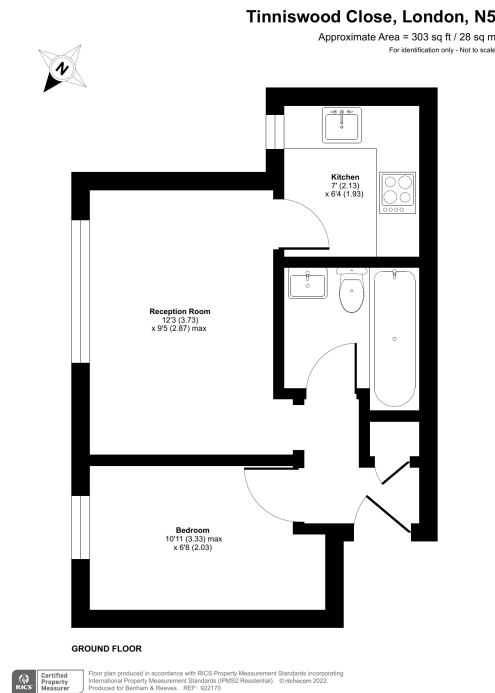
Benham & Reeves



Tinniswood Close, Drayton Park, N5

£318 per week, £1,378 per month + fees

www.benhams.com



Score	Energy rating	Current	Potential
92+	A		
81-91	B		82 B
69-80	C	70 C	
55-68	D		
39-54	E		
21-38	F		
1-20	G		

London branches open six days a week Mon - Sat

Canary Wharf | City | Colindale | Dartmouth Park | Ealing | Fulham
Hammersmith | Hampstead | Highgate | Hyde Park | Kensington | Kew
Knightsbridge | Nine Elms | Shoreditch | Southall | Surrey Quays
Wapping | Wembley | White City | Woolwich

International offices

China | Hong Kong SAR | India | Israel | Malaysia | Middle East | Pakistan
Qatar | Singapore | South Africa | Thailand | Turkey

