



Benham & Reeves

Sovereign Court, Hammersmith, W6

£1,150 per week, £4,983 per month + fees

 3 Bedrooms  2 Bathrooms  Unfurnished

Large luxury apartment set on the twelfth floor of Montpellier House situated in the prestigious Sovereign Court development in the heart of Hammersmith. The property offered on unfurnished basis.

Please [click here](#) for full detail

Property features

3 bedroom 2 bathroom, furnished flat | Wood Floor throughout | Comfort Cooling, Wall heating and Underfloor heating | UNFURNISHED apartment , 1x wall mounted TV | 2 x Cream Stone Finish Luxury Bathroom | EPC-B | Contemporary Open-Plan Fitted Kitchen | 24 hr Concierge / Quality Residents' Gym | Long Hallway / Utility Room / Large Terrace | Moments from Hammersmith Underground Station & Local Buses

For more information about this property,
please call our Hammersmith branch on

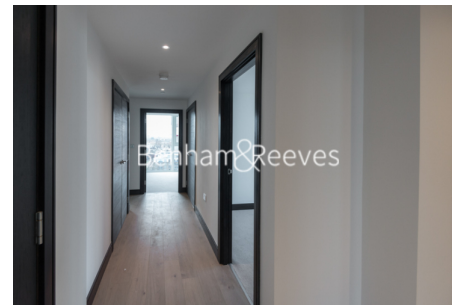
020 8600 0960

Redress & Client Money Protection :

Benham and Reeves are members of The Property Ombudsman redress scheme and have Client Money protection with ARLA Propertymark. You can find more information on our website at <https://www.benhamandreeves.com/membership/>



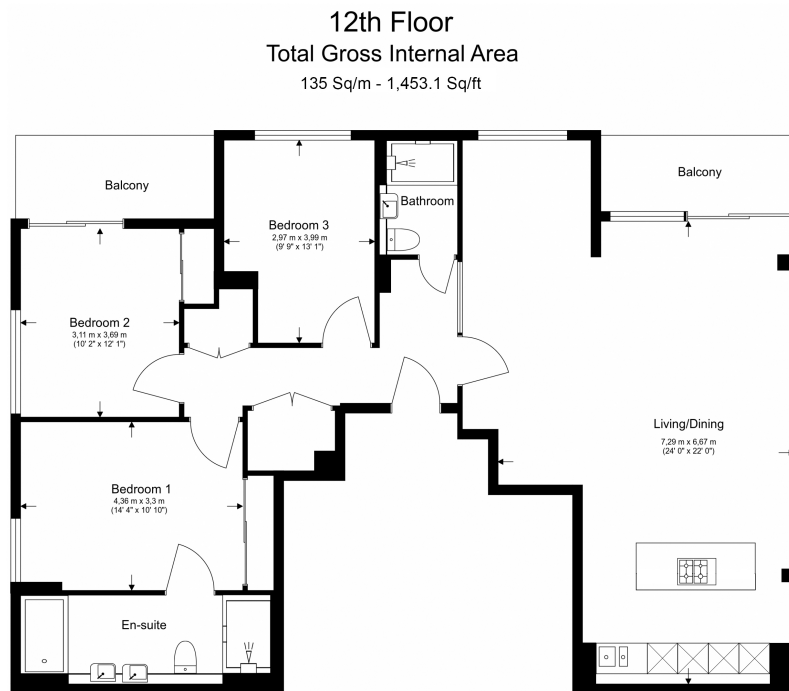
Benham & Reeves



Sovereign Court, Hammersmith, W6

£1,150 per week, £4,983 per month + fees

www.benhams.com



Floor Plan measurements are approximate and are for illustrative purposes only. While we do not doubt the floor plans accuracy, we make no guarantee, warranty or representation as to the accuracy and completeness of the floor plan.

London branches open six days a week Mon - Sat

Canary Wharf | City | Colindale | Dartmouth Park | Ealing | Fulham
Hammersmith | Hampstead | Highgate | Hyde Park | Kensington | Kew
Knightsbridge | Nine Elms | Shoreditch | Southall | Surrey Quays
Wapping | Wembley | White City | Woolwich

International offices

China | Hong Kong SAR | India | Israel | Malaysia | Middle East | Pakistan
Qatar | Singapore | South Africa | Thailand | Turkey



Benham & Reeves