



Benham & Reeves

## Elm Park Gardens, Knightsbridge, SW10

£920 per week, £3,987 per month + fees

 2 Bedrooms    2 Bathrooms    Furnished

This beautiful lower ground TWO-BEDROOM and TWO BATHROOM apartment with two private patios is located in the heart of CHELSEA.

Please [click here](#) for full detail

## Property features

**2 Bedrooms | 2 Bathrooms | Ample Storage Space | Separate Kitchen | Patios | 1,134 Sq Ft | Large Reception Room | Guest Cloakroom | Close To Shops And Restaurants | Walking Distance To South Kensington Underground Station (Di**

For more information about this property,  
please call our Knightsbridge branch on

**020 7581 2112**

Redress & Client Money Protection :

Benham and Reeves are members of The Property Ombudsman redress scheme and have Client Money protection with ARLA Propertymark. You can find more information on our website at <https://www.benhams.com/membership/>



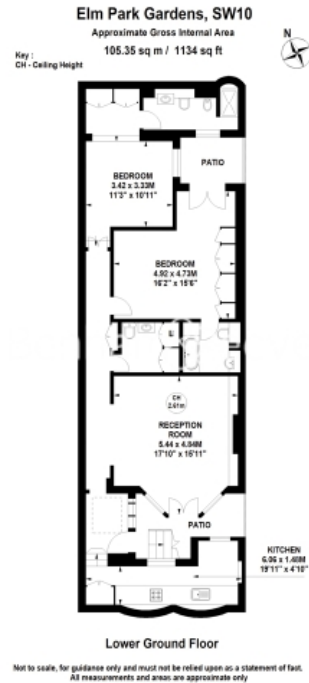
Benham & Reeves



# Elm Park Gardens, Knightsbridge, SW10

£920 per week, £3,987 per month + fees

www.benhams.com



Score	Energy rating	Current	Potential
92+	A		
81-91	B		82   B
69-80	C		
55-68	D		
39-54	E		
21-38	F	29   F	
1-20	G		

## London branches open six days a week Mon - Sat

Canary Wharf | City | Colindale | Dartmouth Park | Ealing | Fulham  
Hammersmith | Hampstead | Highgate | Hyde Park | Kensington | Kew  
Knightsbridge | Nine Elms | Shoreditch | Southall | Surrey Quays  
Wapping | Wembley | White City | Woolwich

## International offices

China | Hong Kong SAR | India | Indonesia | Qatar | Malaysia | Middle East | Pakistan  
Singapore | South Africa | Thailand | Turkey

