



Benham & Reeves

## Ovington Court, Knightsbridge SW3

£750 per week, £3,250 per month + fees

🛏 1 Bedroom    🚿 1 Bathroom    🛋 Furnished

A 958 sq ft ONE-BEDROOM apartment on the first floor of OVERTON COURT in the heart of KNIGHTSBRIDGE. This spacious property benefits from close proximity to Harrods, South Kensington & Chelsea's popular Walton Street. Overton Court features a glamorous art deco lobby, lift and daytime Porter.

Please [click here](#) for full detail

## Property features

**1 Bedroom | 1 Bathroom | Spacious Reception | Furnished | Fully-Fitted Separate Kitchen | EPC-E | Daytime Porter and Lift | Close to Harrods, Beauchamp Place and Sloane Street | Nearby South Kensington(Circle, District & Piccadilly Lines)**

For more information about this property,  
please call our Knightsbridge branch on

**020 7581 2112**

Redress & Client Money Protection :

Benham and Reeves are members of The Property Ombudsman redress scheme and have Client Money protection with ARLA Propertymark. You can find more information on our website at <https://www.benhamandreeves.com/membership/>

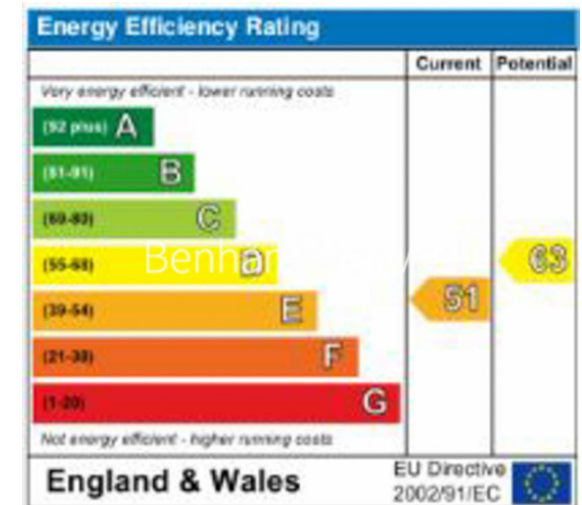
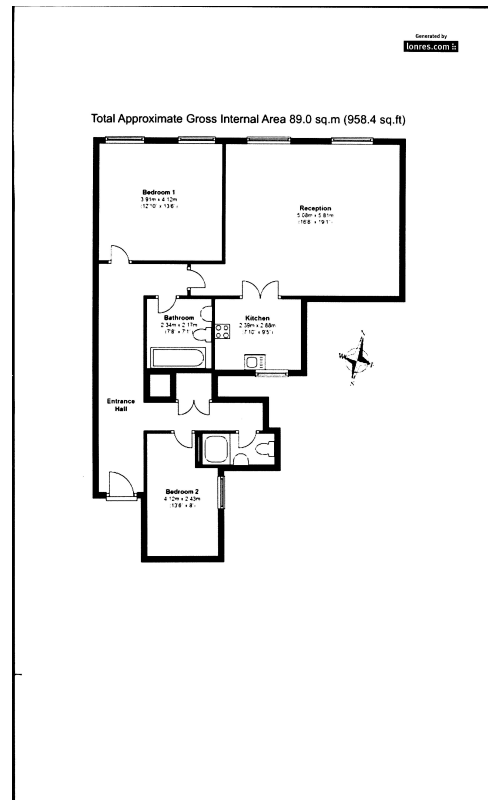


**Benham & Reeves**

# Ovington Court, Knightsbridge SW3

£750 per week, £3,250 per month + fees

[www.benhams.com](http://www.benhams.com)



## London branches open six days a week Mon - Sat

Canary Wharf | City | Colindale | Dartmouth Park | Ealing | Fulham  
Hammersmith | Hampstead | Highgate | Hyde Park | Kensington | Kew  
Knightsbridge | Nine Elms | Shoreditch | Southall | Surrey Quays  
Wapping | Wembley | White City | Woolwich

## International offices

China | Hong Kong SAR | India | Indonesia | Qatar | Malaysia | Middle East |  
Singapore | South Africa | Thailand | Turkey



Benham & Reeves