



Benham & Reeves

Kingston House South, Knightsbridge SW7

£2,750 per week, £11,917 per month + fees

 3 Bedrooms  2 Bathrooms  Furnished

An exquisite 1,568 sq ft THREE-BEDROOM luxury apartment with private BALCONY set within the prestigious KINGSTON HOUSE SOUTH on Ennismore Gardens in the desirable area KNIGHTSBRIDGE and just moments from Hyde Park.

Please [click here](#) for full detail

Property features

3 Bedrooms | 2 Bathrooms | Reception Room | Furnished | Fitted Kitchen | EPC-C | Communal Garden | 24-Hr Porter | Nearby Knightsbridge Station

For more information about this property,
please call our Knightsbridge branch on

020 7581 2112

Redress & Client Money Protection :

Benham and Reeves are members of The Property Ombudsman redress scheme and have Client Money protection with ARLA Propertymark. You can find more information on our website at <https://www.benhamandreeves.com/membership/>



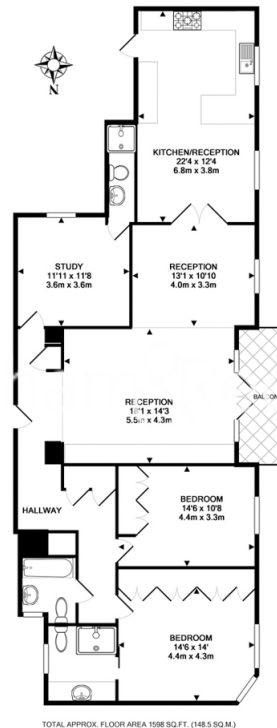
Benham & Reeves



Kingston House South, Knightsbridge SW7

£2,750 per week, £11,917 per month + fees

www.benhams.com



London branches open six days a week Mon - Sat

Canary Wharf | City | Colindale | Dartmouth Park | Ealing | Fulham
Hammersmith | Hampstead | Highgate | Hyde Park | Kensington | Kew
Knightsbridge | Nine Elms | Shoreditch | Southall | Surrey Quays
Wapping | Wembley | White City | Woolwich

International offices

China | Hong Kong SAR | India | Indonesia | Qatar | Malaysia | Middle East | Pakistan
Singapore | South Africa | Thailand | Turkey



Benham & Reeves