



Benham & Reeves

Ennismore Gardens, Knightsbridge, SW7

£2,745 per week, £11,895 per month + fees

 3 Bedrooms  2 Bathrooms  Furnished

A stunning 1,546 sq ft THREE-BEDROOM PENTHOUSE apartment situated within a spectacular Regency building on ENNISMORE GARDENS in a prime KNIGHTSBRIDGE location. This exquisite property is located within minutes of the fantastic shops, restaurants & bars of Sloane Street.

Please [click here](#) for full detail

Property features

Penthouse Apartment | Spectacular Regency Building | Designer Furnishings | Media Suite w/Smart TVs | 1,546 sq ft | EPC-E | Utility Room | Private Lift to the Penthouse | Daytime Porter | Prime Knightsbridge Location

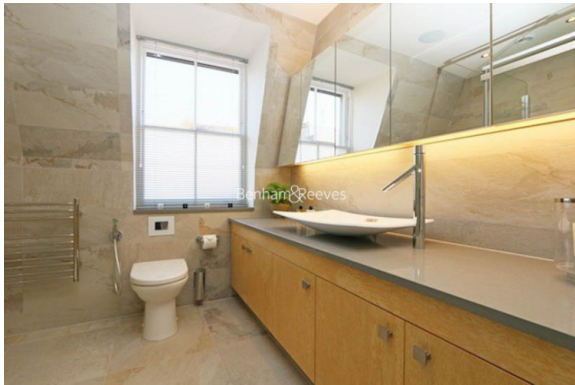
For more information about this property, please call our Knightsbridge branch on

020 7581 2112

Redress & Client Money Protection :
Benham and Reeves are members of The Property Ombudsman redress scheme and have Client Money protection with ARLA Propertymark.
You can find more information on our website at <https://www.benhams.com/membership/>



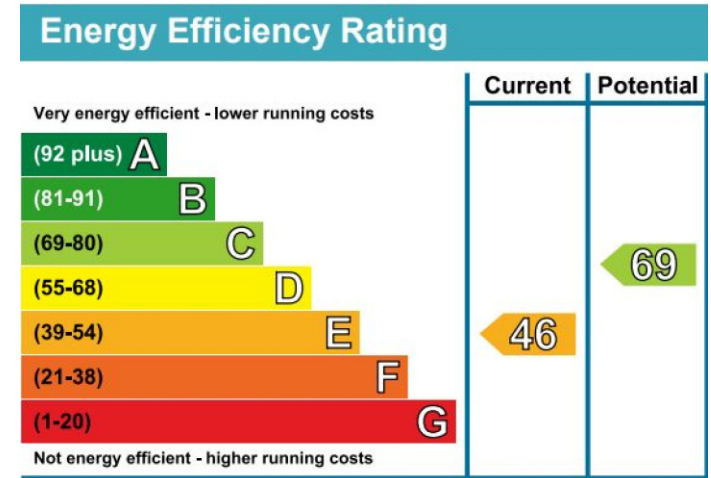
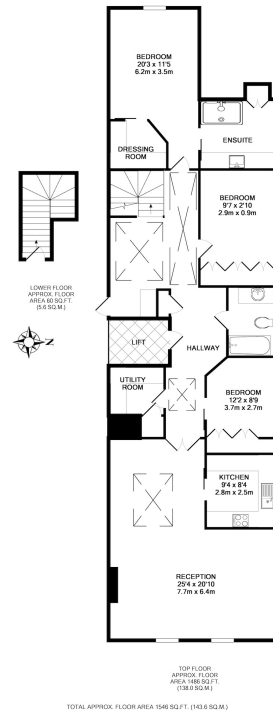
Benham & Reeves



Ennismore Gardens, Knightsbridge, SW7

£2,745 per week, £11,895 per month + fees

www.benhams.com



London branches open six days a week Mon - Sat

Canary Wharf | City | Colindale | Dartmouth Park | Ealing | Fulham
Hammersmith | Hampstead | Highgate | Hyde Park | Kensington | Kew
Knightsbridge | Nine Elms | Shoreditch | Southall | Surrey Quays
Wapping | Wembley | White City | Woolwich

International offices

China | Hong Kong SAR | India | Indonesia | Qatar | Malaysia | Middle East |
Singapore | South Africa | Thailand | Turkey

