



Benham & Reeves

Ennismore Gardens, Knightsbridge, SW7

£950 per week, £4,117 per month + fees

 1 Bedroom  1 Bathroom 
Furnished/UnFurnished

An exceptional 800 sq ft ONE-BEDROOM west-facing top floor apartment in prestigious ENNISMORE GARDENS in the heart of prestigious KNIGHTSBRIDGE.

Recently-refurbished by Interior Designer extraordinaire - Melodi Horne - this sensational property is a dream home for the discerning single professional or couple.

Please [click here](#) for full detail

Property features

Knightsbridge Location | Communal Gardens | Top Floor | Amazing Views | 800 sq ft | EPC-D | Guest Cloakroom | Access To Resident Gardens | Minutes From Harrods And Sloane Street | Short Walk To Hyde Park

For more information about this property, please call our Knightsbridge branch on

020 7581 2112

Redress & Client Money Protection :

Benham and Reeves are members of The Property Ombudsman redress scheme and have Client Money protection with ARLA Propertymark. You can find more information on our website at <https://www.benhams.com/membership/>



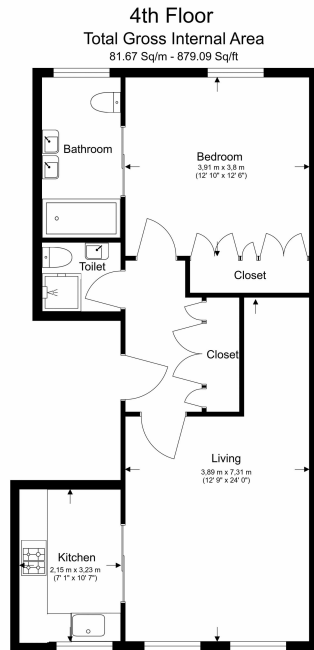
Benham & Reeves



Ennismore Gardens, Knightsbridge, SW7

£950 per week, £4,117 per month + fees

www.benhams.com



Floor Plan measurements are approximate and are for illustrative purposes only. While we do not doubt the floor plans accuracy, we make no guarantee, warranty or representation as to the accuracy and completeness of the floor plan.

Score	Energy rating	Current	Potential
92+	A		
81-91	B		86 B
69-80	C		
55-68	D	61 D	
39-54	E		
21-38	F		
1-20	G		

London branches open six days a week Mon - Sat

Canary Wharf | City | Colindale | Dartmouth Park | Ealing | Fulham
Hammersmith | Hampstead | Highgate | Hyde Park | Kensington | Kew
Knightsbridge | Nine Elms | Shoreditch | Southall | Surrey Quays
Wapping | Wembley | White City | Woolwich

International offices

China | Hong Kong SAR | India | Indonesia | Qatar | Malaysia | Middle East |
Singapore | South Africa | Thailand | Turkey



Benham & Reeves