



Benham&Reeves

## **One Thames Quay, Canary wharf, E14**

£831 per week, £3,600 per month + fees

 2 Bedrooms    2 Bathrooms    Furnished

Luxurious apartment situated within a prestigious development boasting stunning resident facilities, located in the heart of Canary Wharf and close to excellent transport links.

Please [click here](#) for full detail

## Property features

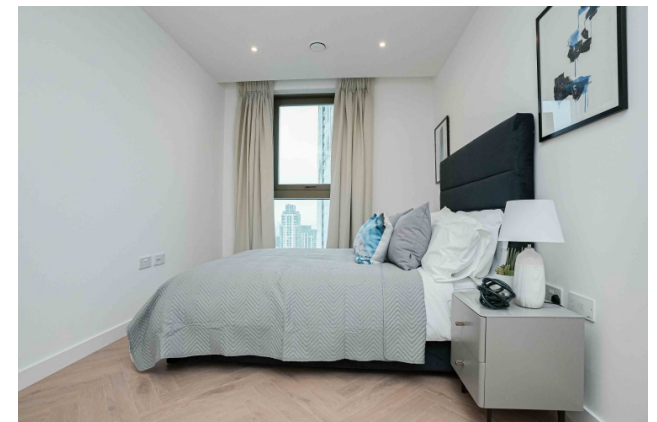
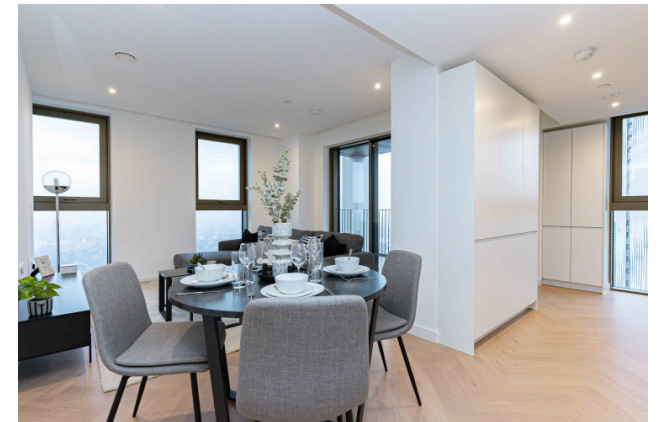
**Two Double Bedroom | Two Bathroom | Open Planned Living | Furnished | Fitted Kitchen | EPC-B | Benefits from 24 hour Concierge and Residents Gym | Walking distance to Canary wharf | Nearby DLR South Quay Plaza station**

For more information about this property,  
please call our Canary Wharf branch on

**020 8036 3200**

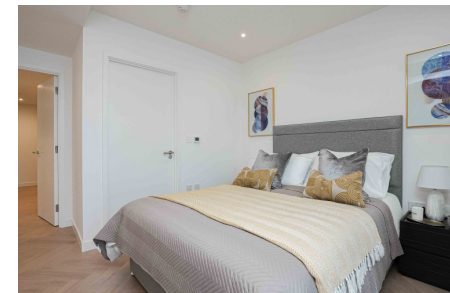
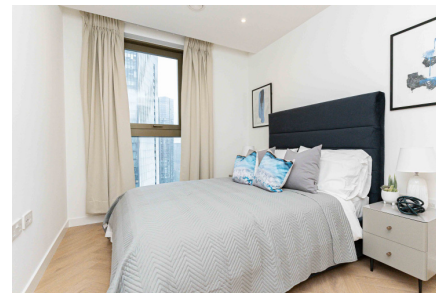
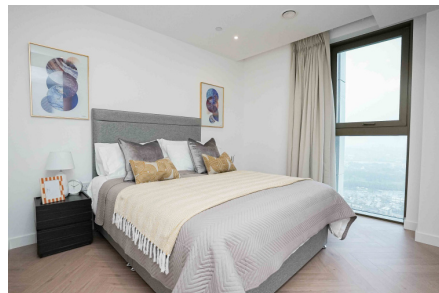
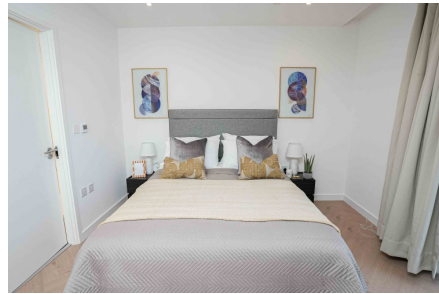
Redress & Client Money Protection :

Benham and Reeves are members of The Property Ombudsman redress scheme and have Client Money protection with ARLA Propertymark. You can find more information on our website at <https://www.benhams.com/membership/>



Benham & Reeves





# One Thames Quay, Canary wharf, E14

£831 per week, £3,600 per month + fees

[www.benhams.com](http://www.benhams.com)



Score	Energy rating	Current	Potential
92+	A		
81-91	B	85 B	85 B
69-80	C		
55-68	D		
39-54	E		
21-38	F		
1-20	G		

## London branches open six days a week Mon - Sat

Canary Wharf | City | Colindale | Dartmouth Park | Ealing | Fulham  
Hammersmith | Hampstead | Highgate | Hyde Park | Kensington | Kew  
Knightsbridge | Nine Elms | Shoreditch | Southall | Surrey Quays  
Wapping | Wembley | White City | Woolwich

## International offices

China | Hong Kong SAR | India | Indonesia | Qatar | Malaysia | Middle East | Pakistan  
Singapore | South Africa | Thailand | Turkey



Benham&Reeves