



Benham & Reeves

Marsh Wall, Landmark East Tower, E14

£577 per week, £2,500 per month + fees

🛏 1 Bedroom 🚿 1 Bathroom 🛋 Furnished

A bright, spacious apartment with stunning views of Canary Wharf and Greenwich situated within a sought-after Tower development, minutes from Canary Wharf Station.

Please [click here](#) for full detail

Property features

One Bedroom | One Bathroom | Fitted Kitchen | Open Plan Living | 24 Hr Concierge | EPC-B | Residence Gym | 24 Hour Concierge | Floor to Ceiling Windows | Nearby canary Wharf Underground Station

For more information about this property,
please call our Canary Wharf branch on

020 8036 3200

Redress & Client Money Protection :

Benham and Reeves are members of The Property Ombudsman redress scheme and have Client Money protection with ARLA Propertymark. You can find more information on our website at <https://www.benhams.com/membership/>



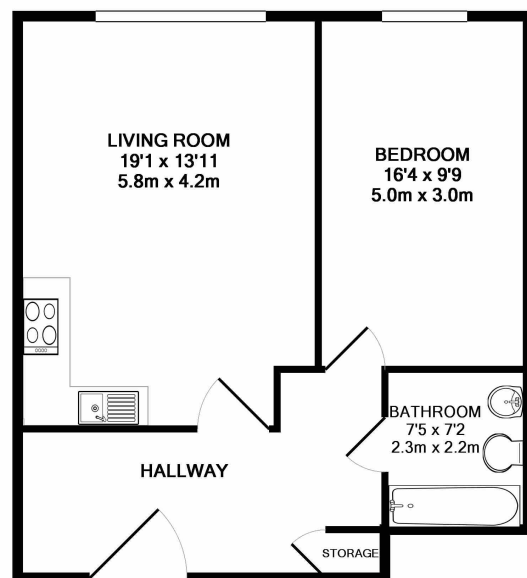
Benham & Reeves



Marsh Wall, Landmark East Tower, E14

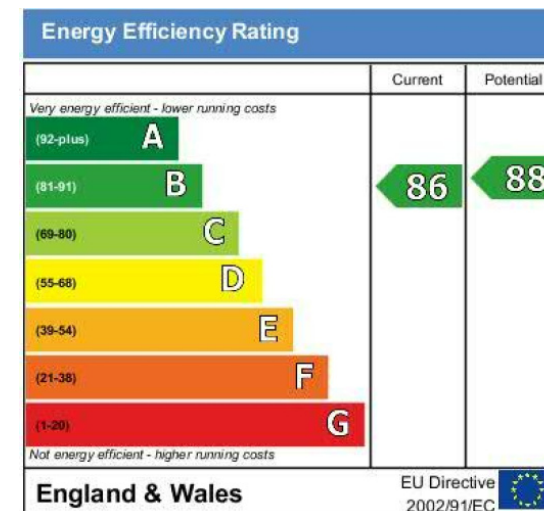
£577 per week, £2,500 per month + fees

www.benhams.com



TOTAL APPROX. FLOOR AREA 599 SQ.FT. (55.7 SQ.M.)

Whilst every attempt has been made to ensure the accuracy of the floor plan contained here, measurements of doors, windows, rooms and any other items are approximate and no responsibility is taken for any error, omission, or mis-statement. This plan is for illustrative purposes only and should be used as such by any prospective purchaser. The services, systems and appliances shown have not been tested and no guarantee as to their operability or efficiency can be given
Made with Metropix ©2017



London branches open six days a week Mon - Sat

Canary Wharf | City | Colindale | Dartmouth Park | Ealing | Fulham
Hammersmith | Hampstead | Highgate | Hyde Park | Kensington | Kew
Knightsbridge | Nine Elms | Shoreditch | Southall | Surrey Quays
Wapping | Wembley | White City | Woolwich

International offices

China | Hong Kong SAR | India | Indonesia | Qatar | Malaysia | Middle East | Pakistan
Singapore | South Africa | Thailand | Turkey



Benham & Reeves