



Benham & Reeves

Mahogany House, Lensbury Avenue, SW6

£800 per week, £3,467 per month + fees

 2 Bedrooms  2 Bathrooms  Furnished

A large bright 3rd floor air-conditioned apartment, Situated within a landmark Riverside development with 1 right to park, minutes from Imperial Wharf Overground Station.

Please [click here](#) for full detail

Property features

2 Double Bedroom with Built-in Wardrobes(3rd floor with Lift | 1 parking space | Good Size Hallway / Ample Storage / Private Balcony | 24hr Concierge / Gym included | Open-Plan Kitchen Integrated with Well-Known Appliances | EPC-B | Furnished | 2 Luxury Spacious Bathroom (1x En-Suite Shower & 1xBathroom | Recently decorated | Moments to Imperial Wharf Station

For more information about this property,
please call our Fulham branch on

020 7348 7620

Redress & Client Money Protection :

Benham and Reeves are members of The Property Ombudsman redress scheme and have Client Money protection with ARLA Propertymark. You can find more information on our website at <https://www.benhams.com/membership/>



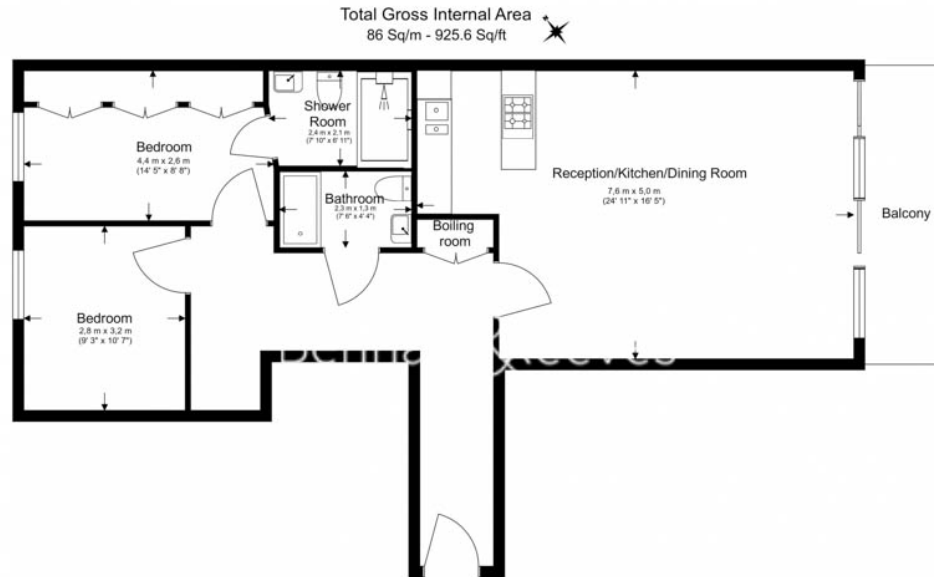
Benham&Reeves



Mahogany House, Lensbury Avenue, SW6

£800 per week, £3,467 per month + fees

www.benhams.com



Floor Plan measurements are approximate and are for illustrative purposes only. While we do not doubt the floor plans accuracy, we make no guarantee, warranty or representation as to the accuracy and completeness of the floor plan.

Score	Energy rating	Current	Potential
92+	A		
81-91	B	82 B	85 B
69-80	C		
55-68	D		
39-54	E		
21-38	F		
1-20	G		

London branches open six days a week Mon - Sat

Canary Wharf | City | Colindale | Dartmouth Park | Ealing | Fulham
Hammersmith | Hampstead | Highgate | Hyde Park | Kensington | Kew
Knightsbridge | Nine Elms | Shoreditch | Southall | Surrey Quays
Wapping | Wembley | White City | Woolwich

International offices

China | Hong Kong SAR | India | Indonesia | Qatar | Malaysia | Middle East | Pakistan
Singapore | South Africa | Thailand | Turkey



Benham & Reeves